



**SCIENTIFIC COMMITTEE  
TWENTY FIRST REGULAR SESSION**  
Nuku'alofa, Tonga  
13–21 August 2025

---

**Estimates of Annual Catches in the WCPFC Statistical Area**

---

**WCPFC-SC21-2025/ST-IP-01\_rev3**

**19 August 2025**

**Paper prepared by**

**Pacific Community (SPC)  
Oceanic Fisheries Programme (OFP)**

Rev 1: Corrected 2024 values in Table 15

Rev 2: Corrected header labels in Tables 8-10

Rev 3: Corrected a gap in the 2024 WCPO catch estimates (Tables 11 & 15)

## Introduction

Estimates of annual catches in the WCPFC Statistical Area (Figure 1) are presented for target tuna species, i.e., albacore (*Thunnus alalunga*), bigeye (*Thunnus obesus*), skipjack (*Katsuwonus pelamis*) and yellowfin (*Thunnus albacares*), and major billfish species, i.e., black marlin (*Makaira indica*), blue marlin (*Makaira mazara*), striped marlin (*Tetrapturus audax*) and swordfish (*Xiphias gladius*). Estimates of catches of southern bluefin tuna (*Thunnus maccoyii*) are compiled by the Commission for the Conservation of Southern Bluefin Tuna (CCSBT).

## Target Tuna Species

Tables 1 - 6 and Figures 2 and 3 present estimates of annual catches of target tunas in the WCPFC Statistical Area. For a breakdown of recent catch estimates by gear and flag, see [WCPFC \(2024\)](#), and for discussion regarding trends, see [Vidal and Ruaia \(2025\)](#). Data for 2024 should be considered provisional at this time, and in some cases incomplete (e.g., for other ocean areas including the Indian and Atlantic Oceans).

Past studies using observer data (e.g., [Lawson, 2007, 2010, 2012](#); [Hampton and Williams, 2017](#)) show that the purse seine logsheet-reported catch, mainly for associated sets, should contain higher quantities of yellowfin and bigeye tuna, but often these catches have been misreported as skipjack tuna. Purse-seine catch estimates that have been adjusted with species compositions determined from observer grab samples corrected for size selectivity bias (see [Peatman et al., 2024](#) for the latest update) are presented as the official purse-seine catch estimates in Table 5. All composite tables and figures referring to purse-seine species catch are consistent with the Table 5 estimates of purse seine catches of skipjack, yellowfin and bigeye tuna.

Tables 7-10 present estimates of annual catches of target tunas in the Western and Central Pacific Ocean (WCPO) Area and the Eastern Pacific Ocean (EPO) Area (see Figure 1) by gear type. Tables 11-13 present estimates of annual catches of target tunas for the WCPO, the EPO and the Pacific Ocean by species. Tables 14 and 15, and Figures 4 and 5 present global catches of target tunas, by species and ocean area, respectively.

## Tuna Discards

Observer data have been used to determine the discard rates for albacore, bigeye and yellowfin caught by longliners (Table 16) and skipjack, yellowfin, and bigeye caught by purse seiners (Table 17).

Tuna discards by longliners in the WCPFC Statistical Area during 2013–2024 were estimated by calculating flag, year, and species-specific discard rates using observer data. Those rates were then applied to the flag-specific annual catches to estimate discards. The total estimated discard rate was therefore, the ratio of the total estimated discards across all fleets to the total annual catch estimates, by species and year (effectively weighting the discard rates by total catch). Flag/year combinations were excluded from the estimation of the WCPFC discard rate when there were insufficient data (defined as (i) less than 10 observer trips or (ii) less than 500 fish samples available); the overall discard rate was applied to these fleets in the estimation of total discards.

The average discard rate for the three target tuna species caught by longliners from 2013-2024 was 3%. During 2024, the estimated tuna discard was 4.6% and based on available observer data in recent years (since 2015), most of the bigeye and yellowfin tuna discards were comprised of fish less than 95 cm (Figures 6 and 7) which were too small to be commercially viable and were not kept due to limited storage space. Discards of larger tuna in the longline fishery are mainly due to predation by sharks and toothed whales.

Tuna discards by purse seiners in the WCPFC Statistical Area during 2013–2024 were estimated by applying a mean-weighted discard rate, using the estimated discard rates by flag, year, school association (unassociated and associated) and species, determined from observer data and weighting by the annual catches for the same strata (i.e., flag, year, school association, and species). Discard rates for flag/year/school association combinations where there were insufficient data (defined as (i) less than 5 observer trips or (ii) less than 1,000 mt of catch observed) were excluded from the overall discard rate estimation; however, the overall discard rate was applied to these fleets in the estimation of total discards.

The average discard rate for the three target tuna species caught by purse seiners from 2013–2023 was 1.3%, with an estimated 0.5% discarded in 2024<sup>1</sup>. Panizza et al. (2025) provides a more comprehensive summary of observer coverage rates and Regional Observer Programme data in recent years.

The submission of annual estimates of discards for the WCPFC key species is a mandatory requirement under the Scientific Data to be Provided to the Commission covering data from 2017 onwards.

## Major Billfish Species and Albacore

Table 18 presents estimates of commercial catches of the four major billfish species by gear type. Table 19 and Figure 8 present estimates of the major billfish catches for all gear types combined. Tables 20 and 21 present estimates of commercial catches of albacore, striped marlin, and swordfish in the WCPFC Statistical Area north and south of the equator respectively. Table 22 presents estimates of commercial catches of albacore, striped marlin and swordfish in the Pacific Ocean, south of the equator.

## REFERENCES

- Hampton, J. and Williams, P. (2017). Annual estimates of purse-seine catches by species based on alternative data sources and a review of current purse-seine catch estimate issues and future plans. *WCPFC SC11 ST-IP-05, Rarotonga, Cook Islands, 9-17 August*.
- Lawson, T. (2010). Update on the estimation of selectivity bias based on paired spill and grab samples collected by observers on purse seiners in the Western and Central Pacific Ocean. *WCPFC SC6 ST-WP-02, Nuku'alofa, Tonga, 10-19 August*.
- Lawson, T. (2012). Estimation of the species composition of the catch by purse seiners in the Western and Central Pacific Ocean using grab samples and spill samples collected by observers. *WCPFC SC8 ST-WP-03, Busan, Republic of Korea, 7-15 August*.
- Lawson, T. A. (2007). Further analysis of the proportion of bigeye in 'yellowfin plus bigeye' caught by purse seiners in the WCPFC Statistical Area. *WCPFC SC3 ST-IP-05, Honolulu, Hawaii, United States, 13-24 August*.
- Panizza, A., Vidal, T., Falasi, C., Loganimoce, E., and Schneiter, E. (2025). Status of ROP data management. *WCPFC SC21 ST-IP-05, Nuku'alofa, Tonga, 13-21 August*.
- Peatman, T., Vidal, T., Williams, P., and Nicol, S. (2024). Project 60: Progress towards achieving SC18 recommendations. *WCPFC SC20 ST-WP-02, Manila, Philippines, 14-21 August*.
- Vidal, T. and Ruaia, T. (2025). Overview of tuna fisheries in the Western and Central Pacific Ocean, including economic conditions - 2024. *WCPFC SC21 GN-WP-01, Nuku'alofa, Tonga, 13-21 August*.
- WCPFC (2024). WCPFC Tuna Fishery Yearbook - 2024. *Western and Central Pacific Fisheries Commission, Pohnpei, Federated States of Micronesia*.

---

<sup>1</sup> The reporting of purse-seine discards by vessel is a requirement under CMM 2009-02 and is currently independent to the estimates produced in this paper.

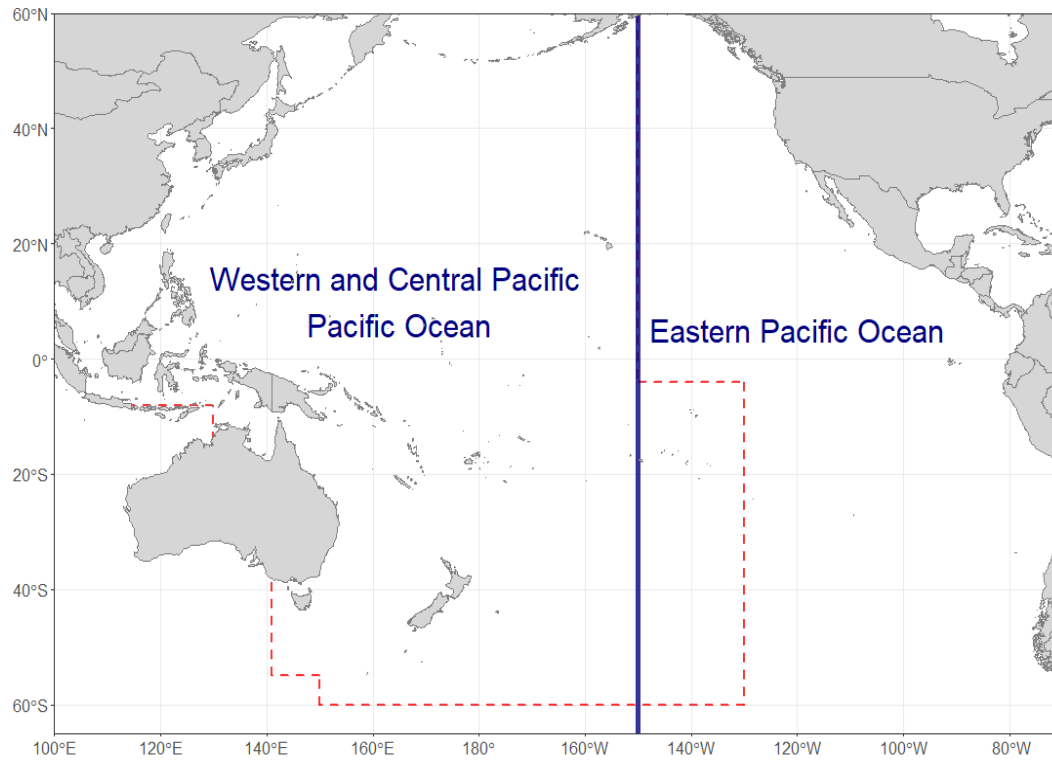


Figure 1: Western and Central Pacific Ocean (WCPO) / Eastern Pacific Ocean (EPO), showing the overlap area (dashed line in the EPO)

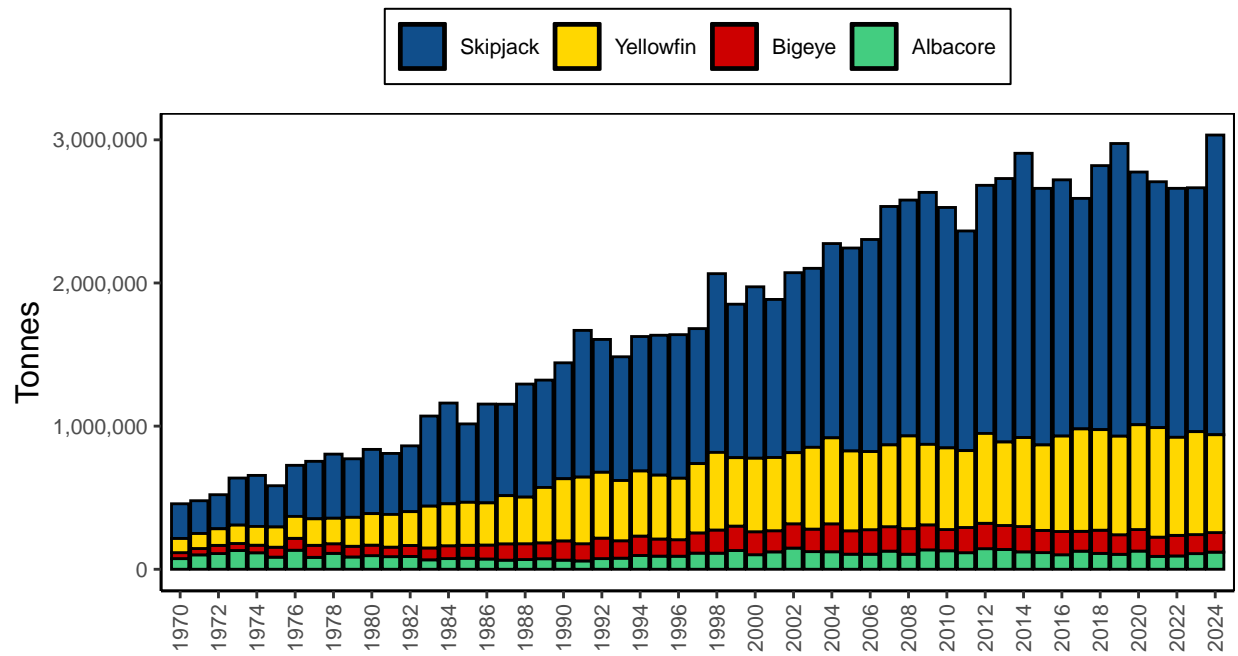


Figure 2: Catches of tuna in the WCPFC Statistical Area, by species

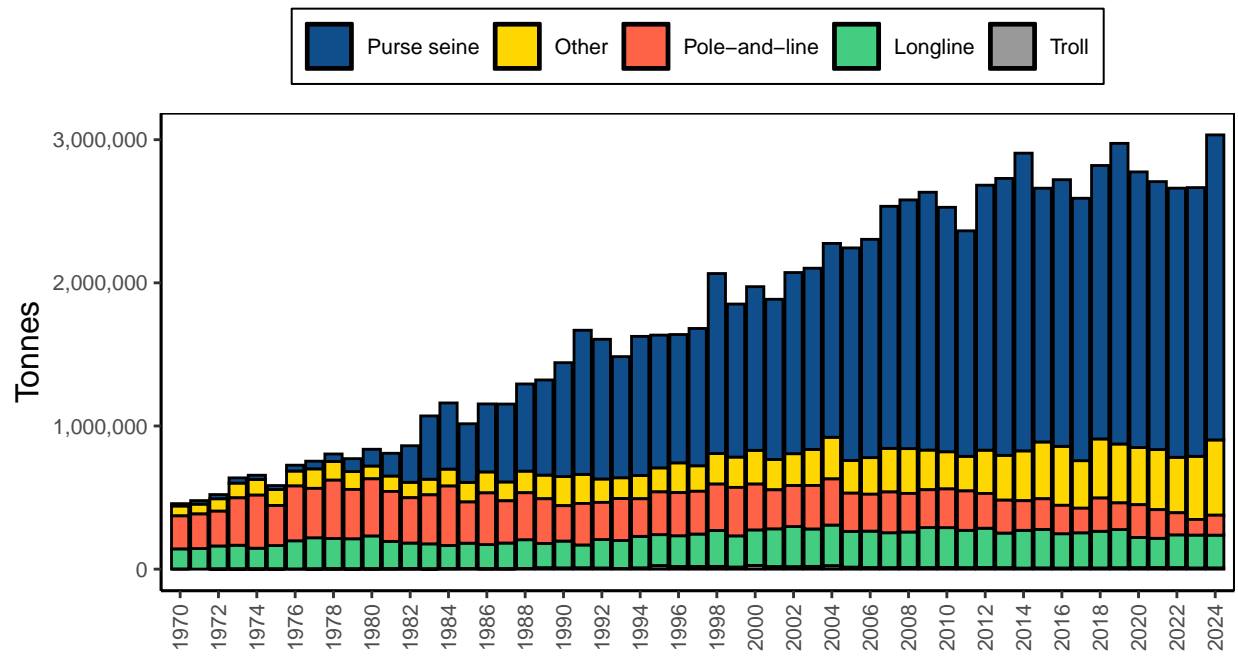


Figure 3: Catches of tuna in the WCPFC Statistical Area, by gear

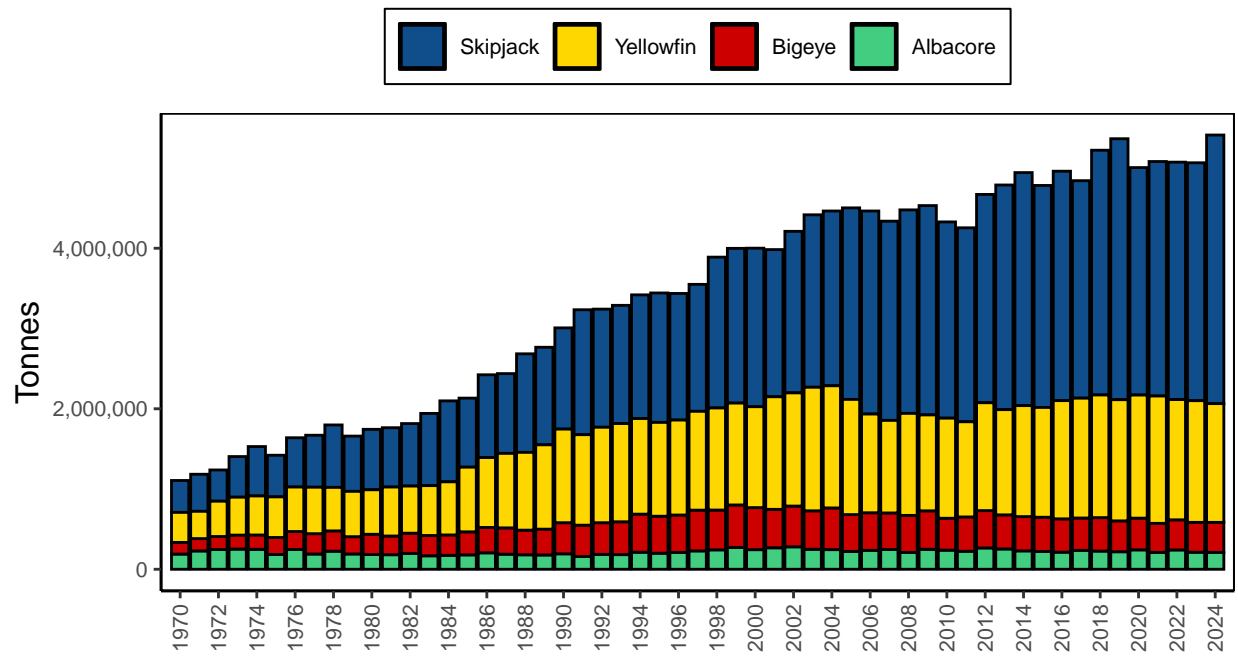


Figure 4: Global tuna catches, by species

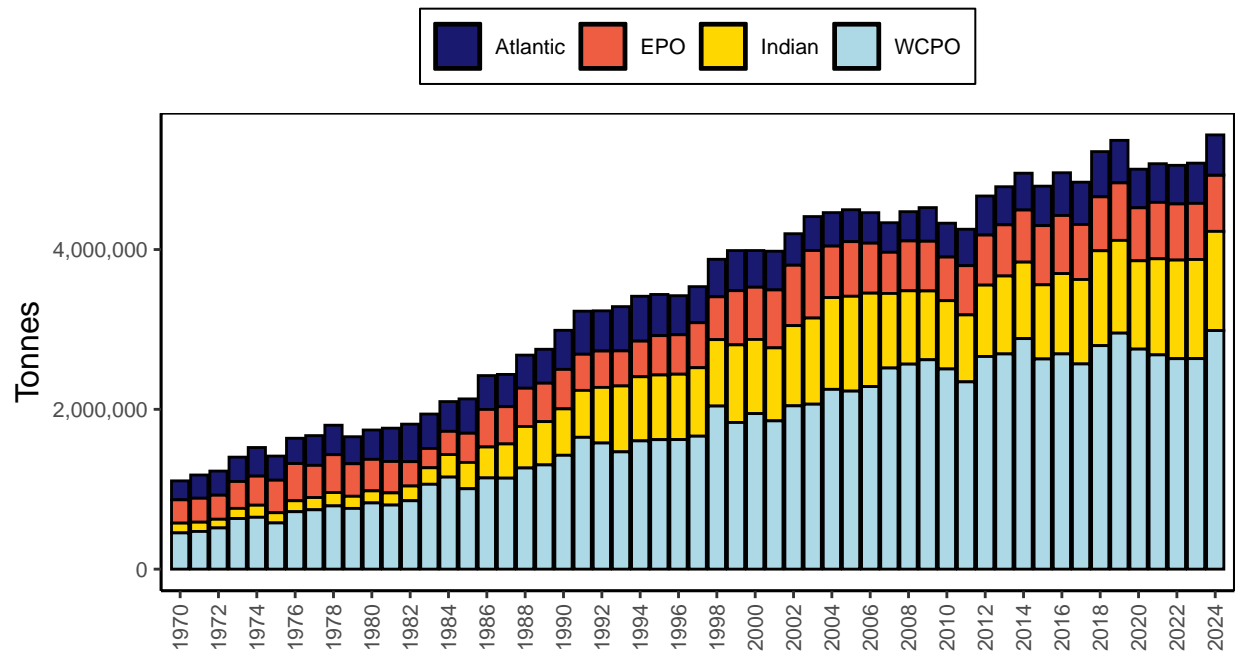


Figure 5: Global tuna catches, by ocean area

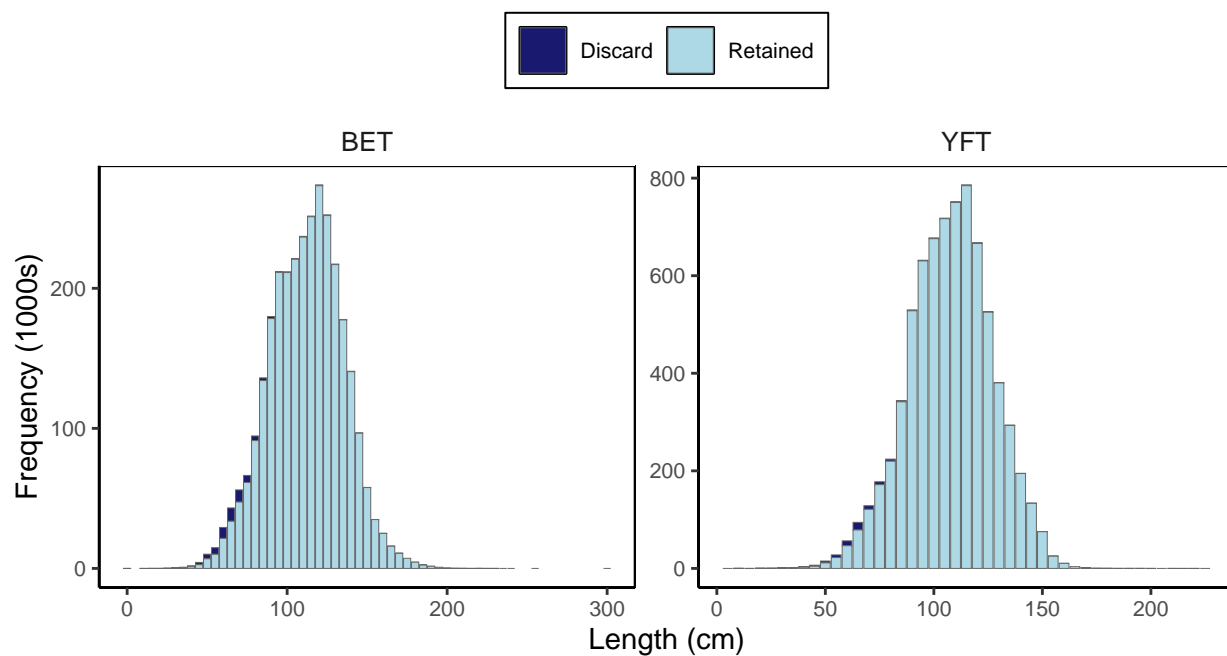


Figure 6: Longline bigeye (BET) and yellowfin (YFT) tuna retained and discarded catch by length (cm), from 2015-2024 (based on available unweighted, raw observer data)

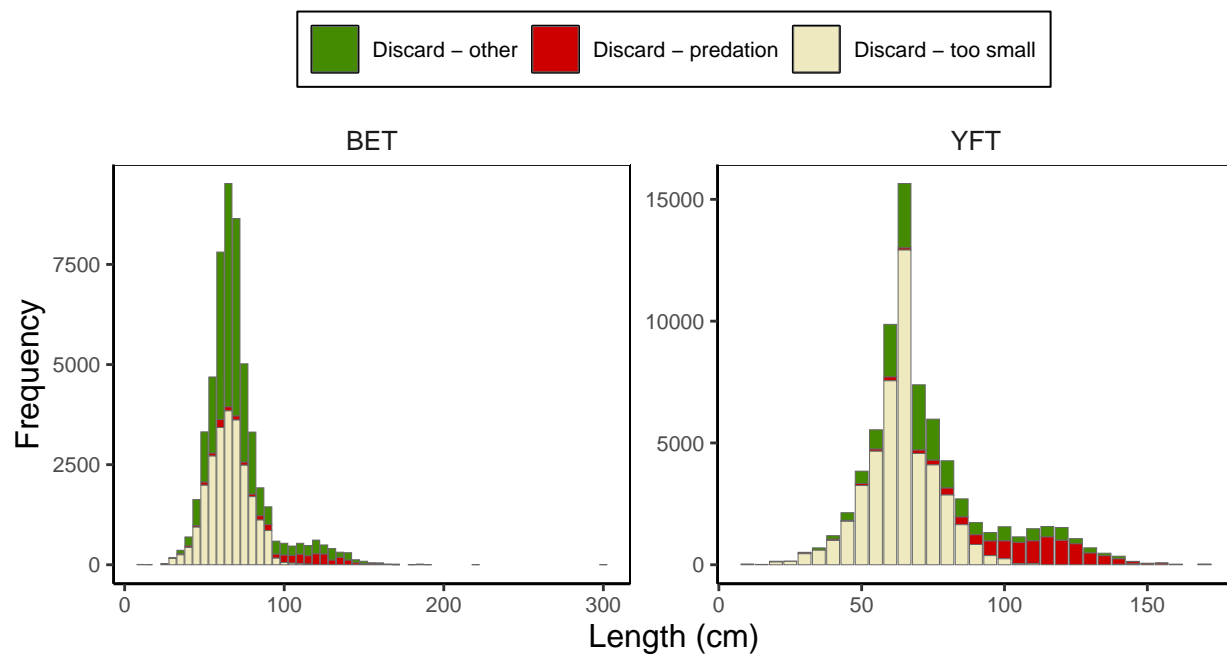


Figure 7: Longline bigeye (BET) and yellowfin (YFT) tuna discarded catch by length (cm) and discard reason category, from 2015-2024 (based on available unweighted, raw observer data)

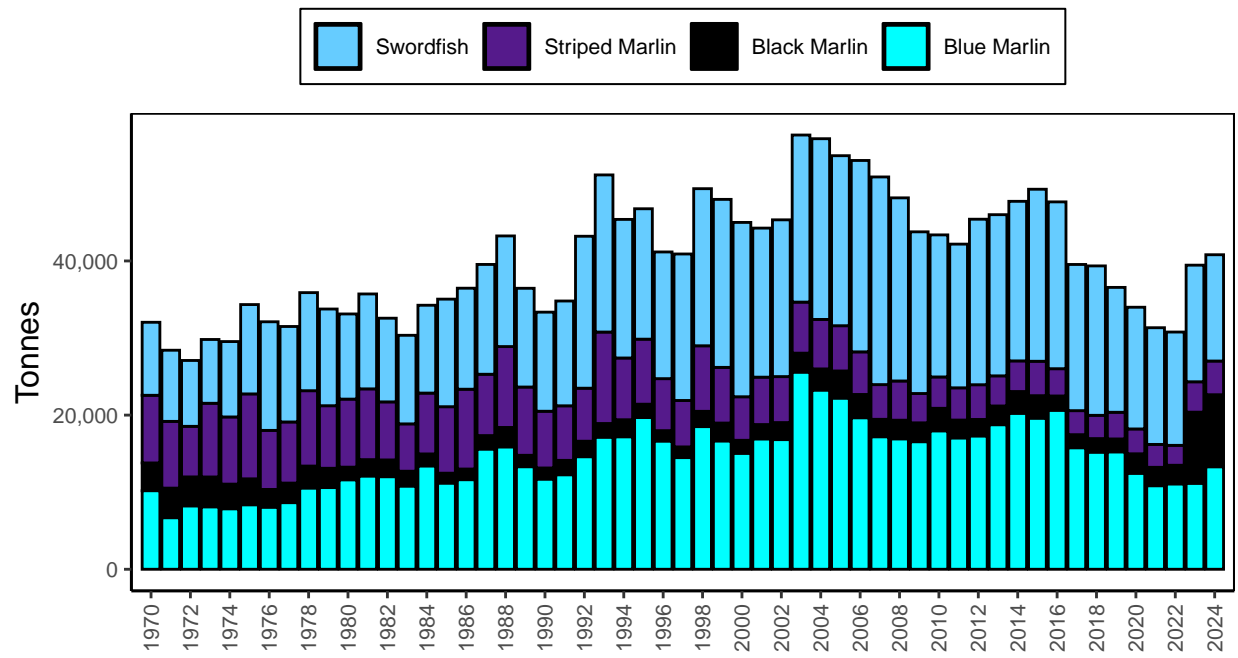


Figure 8: Commercial catches of major billfish species in the WCPFC Statistical Area



Table 1: Total catches of target tunas in the WCPFC Statistical Area, by species

Year	Albacore		Bigeye		Skipjack		Yellowfin		Total
	Tonnes	%	Tonnes	%	Tonnes	%	Tonnes	%	
1970	74,350	16	41,702	9	242,366	53	98,989	22	457,407
1971	100,737	21	44,142	9	228,722	48	104,966	22	478,567
1972	109,655	21	57,163	11	238,082	46	115,885	22	520,785
1973	131,149	21	48,889	8	329,050	52	128,186	20	637,274
1974	115,162	18	52,758	8	356,557	54	131,237	20	655,714
1975	84,651	15	69,314	12	288,468	49	141,279	24	583,712
1976	132,947	18	83,110	11	356,862	49	153,098	21	726,017
1977	83,171	11	84,055	11	401,708	53	185,171	25	754,105
1978	111,161	14	66,964	8	448,039	56	178,188	22	804,352
1979	86,007	11	74,557	10	408,847	53	202,210	26	771,621
1980	95,156	11	73,355	9	448,633	54	220,192	26	837,336
1981	88,095	11	66,352	8	426,215	53	228,548	28	809,210
1982	89,496	10	76,730	9	459,614	53	236,225	27	862,065
1983	65,988	6	82,856	8	629,453	59	291,967	27	1,070,264
1984	74,540	6	89,648	8	703,988	61	292,830	25	1,161,006
1985	77,060	8	90,508	9	547,717	54	300,145	30	1,015,430
1986	71,757	6	97,580	8	690,369	60	294,282	26	1,153,988
1987	63,645	6	113,979	10	638,743	55	336,657	29	1,153,024
1988	67,948	5	110,236	9	789,843	61	325,604	25	1,293,631
1989	73,533	6	110,967	8	749,978	57	386,890	29	1,321,368
1990	63,872	4	134,376	9	809,942	56	434,013	30	1,442,203
1991	58,322	3	119,886	7	1,025,148	61	465,436	28	1,668,792
1992	74,452	5	143,145	9	928,151	58	459,820	29	1,605,568
1993	77,496	5	121,643	8	864,459	58	420,781	28	1,484,379
1994	96,461	6	135,473	8	939,534	58	454,526	28	1,625,994
1995	91,750	6	119,681	7	977,514	60	445,911	27	1,634,856
1996	91,140	6	115,273	7	1,003,276	61	429,338	26	1,639,027
1997	112,900	7	141,099	8	943,070	56	484,121	29	1,681,190
1998	112,465	5	161,641	8	1,248,763	60	542,243	26	2,065,112
1999	131,066	7	170,450	9	1,072,197	58	478,123	26	1,851,836
2000	101,672	5	160,442	8	1,197,535	61	513,488	26	1,973,137
2001	121,561	6	147,535	8	1,104,396	59	511,511	27	1,885,003
2002	148,051	7	169,452	8	1,257,444	61	496,976	24	2,071,923
2003	123,239	6	157,258	7	1,250,353	59	571,268	27	2,102,118
2004	122,399	5	195,052	9	1,357,372	60	600,555	26	2,275,378
2005	105,371	5	163,189	7	1,418,111	63	557,498	25	2,244,169
2006	105,257	5	171,132	7	1,481,612	64	545,781	24	2,303,782
2007	126,857	5	170,448	7	1,665,759	66	571,584	23	2,534,648
2008	105,109	4	178,622	7	1,647,814	64	647,754	25	2,579,299
2009	135,622	5	174,660	7	1,760,249	67	562,321	21	2,632,852
2010	129,223	5	148,261	6	1,679,879	66	570,230	23	2,527,593
2011	115,766	5	176,070	7	1,534,529	65	537,122	23	2,363,487
2012	143,792	5	177,326	7	1,733,338	65	627,840	23	2,682,296
2013	138,396	5	167,323	6	1,840,855	67	583,114	21	2,729,688
2014	121,719	4	176,901	6	1,985,679	68	621,662	21	2,905,961
2015	116,364	4	155,008	6	1,792,612	67	597,033	22	2,661,017
2016	101,268	4	162,635	6	1,790,256	66	666,412	24	2,720,571
2017	126,541	5	138,473	5	1,610,457	62	715,461	28	2,590,932
2018	110,893	4	161,871	6	1,844,530	65	702,662	25	2,819,956
2019	104,393	4	136,676	5	2,044,779	69	688,466	23	2,974,314
2020	127,319	5	150,027	5	1,765,415	64	732,390	26	2,775,151
2021	90,012	3	134,433	5	1,717,465	63	765,185	28	2,707,095
2022	93,114	3	143,524	5	1,739,725	65	684,937	26	2,661,300
2023	109,336	4	132,772	5	1,703,676	64	719,378	27	2,665,161
2024	119,817	4	136,327	4	2,093,827	69	683,627	23	3,033,598

Table 2: Total catches of albacore, bigeye, skipjack and yellowfin in the WCPFC Statistical Area, by gear type

Year	Longline		Pole-and-line		Purse seine		Troll		Other		Total
	Tonnes	%	Tonnes	%	Tonnes	%	Tonnes	%	Tonnes	%	
1970	141,360	31	230,142	50	16,222	4	50	0	69,633	15	457,407
1971	143,625	30	241,506	50	24,511	5	...	...	68,925	14	478,567
1972	161,533	31	242,745	47	29,030	6	268	0	87,209	17	520,785
1973	166,399	26	330,841	52	36,269	6	484	0	103,281	16	637,274
1974	145,192	22	370,499	57	29,547	5	898	0	109,578	17	655,714
1975	164,049	28	279,663	48	27,685	5	646	0	111,669	19	583,712
1976	198,013	27	382,627	53	40,770	6	25	0	104,582	14	726,017
1977	218,413	29	345,257	46	53,492	7	621	0	136,322	18	754,105
1978	212,059	26	407,482	51	52,041	6	1,686	0	131,084	16	804,352
1979	211,221	27	344,799	45	90,103	12	814	0	124,684	16	771,621
1980	230,625	28	398,498	48	116,755	14	1,489	0	89,969	11	837,336
1981	191,732	24	348,917	43	158,559	20	2,118	0	107,884	13	809,210
1982	179,575	21	316,457	37	255,491	30	2,552	0	107,990	13	862,065
1983	175,498	16	342,287	32	442,152	41	946	0	109,381	10	1,070,264
1984	162,111	14	415,016	36	462,277	40	3,124	0	118,478	10	1,161,006
1985	177,722	18	287,892	28	409,536	40	3,465	0	136,815	13	1,015,430
1986	169,129	15	360,864	31	474,838	41	2,270	0	146,887	13	1,153,988
1987	179,966	16	294,879	26	543,980	47	2,323	0	131,876	11	1,153,024
1988	200,774	16	327,997	25	608,996	47	4,649	0	151,215	12	1,293,631
1989	170,876	13	311,981	24	664,660	50	8,646	1	165,205	13	1,321,368
1990	188,842	13	247,104	17	795,530	55	7,181	0	203,546	14	1,442,203
1991	160,889	10	290,006	17	1,006,764	60	7,969	0	203,164	12	1,668,792
1992	199,688	12	259,762	16	975,738	61	6,786	0	163,594	10	1,605,568
1993	195,377	13	293,014	20	846,114	57	4,438	0	145,436	10	1,484,379
1994	221,367	14	262,721	16	971,563	60	7,411	0	162,932	10	1,625,994
1995	217,417	13	298,301	18	927,491	57	23,482	1	168,165	10	1,634,856
1996	215,466	13	301,279	18	896,443	55	17,665	1	208,174	13	1,639,027
1997	226,375	13	298,666	18	959,218	57	18,637	1	178,294	11	1,681,190
1998	251,197	12	323,645	16	1,257,392	61	18,982	1	213,896	10	2,065,112
1999	219,024	12	338,480	18	1,068,956	58	13,325	1	212,051	11	1,851,836
2000	248,474	13	319,854	16	1,143,294	58	25,415	1	236,100	12	1,973,137
2001	264,340	14	272,483	14	1,118,917	59	17,032	1	212,231	11	1,885,003
2002	281,627	14	286,202	14	1,265,452	61	15,860	1	222,782	11	2,071,923
2003	261,636	12	303,905	14	1,265,758	60	19,089	1	251,730	12	2,102,118
2004	284,849	13	322,179	14	1,354,239	60	22,971	1	291,140	13	2,275,378
2005	250,698	11	266,735	12	1,484,881	66	13,084	1	228,771	10	2,244,169
2006	255,653	11	257,594	11	1,524,791	66	9,864	0	255,880	11	2,303,782
2007	245,130	10	284,661	11	1,691,082	67	9,067	0	304,708	12	2,534,648
2008	247,755	10	269,551	10	1,737,348	67	11,707	0	312,938	12	2,579,299
2009	280,374	11	264,350	10	1,800,944	68	9,850	0	277,334	11	2,632,852
2010	278,577	11	270,123	11	1,707,563	68	11,284	0	260,046	10	2,527,593
2011	261,756	11	275,070	12	1,575,357	67	9,144	0	242,160	10	2,363,487
2012	275,053	10	242,960	9	1,851,274	69	10,659	0	302,350	11	2,682,296
2013	242,833	9	229,560	8	1,934,752	71	9,211	0	313,332	11	2,729,688
2014	264,682	9	206,939	7	2,079,879	72	6,334	0	348,127	12	2,905,961
2015	270,007	10	214,041	8	1,772,737	67	7,246	0	396,986	15	2,661,017
2016	240,729	9	198,398	7	1,862,822	68	6,663	0	411,959	15	2,720,571
2017	246,325	10	171,570	7	1,833,284	71	7,438	0	332,315	13	2,590,932
2018	257,247	9	232,216	8	1,910,337	68	6,933	0	413,223	15	2,819,956
2019	267,784	9	186,021	6	2,100,135	71	8,619	0	411,755	14	2,974,314
2020	211,933	8	228,506	8	1,925,450	69	9,277	0	399,985	14	2,775,151
2021	205,424	8	200,086	7	1,872,038	69	9,824	0	419,723	16	2,707,095
2022	230,038	9	154,241	6	1,880,130	71	9,344	0	387,547	15	2,661,300
2023	231,103	9	109,358	4	1,877,080	70	6,729	0	440,891	17	2,665,161
2024	230,114	8	139,405	5	2,131,070	70	7,148	0	525,862	17	3,033,598

Table 3: Total catches by longline vessels in the WCPFC Statistical Area, by species

Year	Albacore		Bigeye		Skipjack		Yellowfin		Total
	Tonnes	%	Tonnes	%	Tonnes	%	Tonnes	%	
1970	48,981	35	34,965	25	1,608	1	55,806	39	141,360
1971	46,025	32	38,359	27	1,475	1	57,766	40	143,625
1972	47,774	30	51,040	32	1,544	1	61,175	38	161,533
1973	59,835	36	42,412	25	1,861	1	62,291	37	166,399
1974	39,299	27	45,653	31	2,124	1	58,116	40	145,192
1975	31,180	19	61,488	37	1,919	1	69,462	42	164,049
1976	45,022	23	73,325	37	2,096	1	77,570	39	198,013
1977	48,789	22	72,083	33	3,127	1	94,414	43	218,413
1978	42,260	20	56,364	27	3,233	2	110,202	52	212,059
1979	36,295	17	63,837	30	2,179	1	108,910	52	211,221
1980	42,343	18	62,537	27	632	0	125,113	54	230,625
1981	47,272	25	46,590	24	756	0	97,114	51	191,732
1982	43,876	24	48,578	27	972	1	86,149	48	179,575
1983	36,784	21	46,311	26	2,144	1	90,259	51	175,498
1984	31,277	19	52,976	33	870	1	76,988	47	162,111
1985	38,012	21	58,629	33	1,108	1	79,973	45	177,722
1986	41,702	25	56,989	34	1,439	1	68,999	41	169,129
1987	33,398	19	68,832	38	2,329	1	75,407	42	179,966
1988	41,694	21	68,288	34	1,937	1	88,855	44	200,774
1989	30,147	18	64,916	38	2,507	1	73,306	43	170,876
1990	32,170	17	77,009	41	363	0	79,300	42	188,842
1991	35,459	22	61,033	38	885	1	63,512	39	160,889
1992	45,551	23	75,966	38	432	0	77,739	39	199,688
1993	56,183	29	66,566	34	573	0	72,055	37	195,377
1994	59,629	27	79,175	36	379	0	82,184	37	221,367
1995	60,388	28	68,125	31	598	0	88,306	41	217,417
1996	61,590	29	58,054	27	3,935	2	91,887	43	215,466
1997	72,643	32	68,597	30	4,070	2	81,065	36	226,375
1998	80,042	32	85,048	34	5,030	2	81,077	32	251,197
1999	68,834	31	74,959	34	4,208	2	71,023	32	219,024
2000	70,083	28	76,924	31	4,559	2	96,908	39	248,474
2001	85,022	32	78,690	30	5,059	2	95,569	36	264,340
2002	90,152	32	92,381	33	3,450	1	95,644	34	281,627
2003	79,084	30	83,016	32	3,824	1	95,712	37	261,636
2004	77,023	27	99,709	35	4,051	1	104,066	37	284,849
2005	83,305	33	78,892	31	1,084	0	87,417	35	250,698
2006	85,517	33	83,592	33	1,528	1	85,016	33	255,653
2007	80,326	33	81,113	33	1,175	0	82,516	34	245,130
2008	79,324	32	83,428	34	803	0	84,200	34	247,755
2009	99,274	35	80,507	29	1,220	0	99,373	35	280,374
2010	106,141	38	72,721	26	1,192	0	98,523	35	278,577
2011	85,287	33	77,567	30	1,124	0	97,778	37	261,756
2012	101,412	37	83,971	31	2,004	1	87,666	32	275,053
2013	98,596	41	65,637	27	1,254	1	77,346	32	242,833
2014	86,994	33	75,434	28	1,879	1	100,375	38	264,682
2015	90,356	33	73,397	27	1,879	1	104,375	39	270,007
2016	80,140	33	63,077	26	5,642	2	91,870	38	240,729
2017	99,401	40	58,126	24	2,571	1	86,227	35	246,325
2018	86,447	34	68,911	27	4,162	2	97,727	38	257,247
2019	89,528	33	68,237	25	5,593	2	104,426	39	267,784
2020	77,744	37	57,686	27	2,312	1	74,191	35	211,933
2021	72,409	35	54,640	27	2,847	1	75,528	37	205,424
2022	83,726	36	55,289	24	2,575	1	88,448	38	230,038
2023	88,106	38	55,651	24	2,674	1	84,673	37	231,103
2024	97,867	43	47,667	21	5,718	2	78,862	34	230,114

Table 4: Total catches by pole-and-line vessels in the WCPFC Statistical Area, by species

Year	Albacore		Bigeye		Skipjack		Yellowfin		Total
	Tonnes	%	Tonnes	%	Tonnes	%	Tonnes	%	
1970	24,485	11	3,178	1	197,873	86	4,606	2	230,142
1971	53,451	22	1,862	1	180,945	75	5,248	2	241,506
1972	60,691	25	1,762	1	172,827	71	7,465	3	242,745
1973	68,908	21	1,258	0	253,217	77	7,458	2	330,841
1974	73,676	20	1,039	0	289,202	78	6,582	2	370,499
1975	52,257	19	1,334	0	218,271	78	7,801	3	279,663
1976	85,436	22	3,423	1	276,582	72	17,186	4	382,627
1977	32,034	9	3,325	1	294,641	85	15,257	4	345,257
1978	59,977	15	3,337	1	331,401	81	12,767	3	407,482
1979	44,762	13	2,540	1	285,859	83	11,638	3	344,799
1980	46,843	12	2,916	1	333,597	84	15,142	4	398,498
1981	27,426	8	3,382	1	296,065	85	22,044	6	348,917
1982	29,615	9	4,993	2	264,726	84	17,123	5	316,457
1983	21,098	6	5,077	1	298,928	87	17,184	5	342,287
1984	26,015	6	4,557	1	366,811	88	17,633	4	415,016
1985	20,714	7	5,529	2	238,932	83	22,717	8	287,892
1986	16,096	4	4,133	1	322,665	89	17,970	5	360,864
1987	19,091	6	4,602	2	252,142	86	19,044	6	294,879
1988	6,216	2	5,890	2	295,325	90	20,566	6	327,997
1989	8,629	3	6,131	2	275,088	88	22,133	7	311,981
1990	8,777	4	5,985	2	211,573	86	20,769	8	247,104
1991	7,117	2	3,929	1	259,778	90	19,182	7	290,006
1992	13,899	5	4,055	2	218,765	84	23,043	9	259,762
1993	12,871	4	4,505	2	255,152	87	20,486	7	293,014
1994	26,456	10	5,251	2	209,636	80	21,378	8	262,721
1995	21,120	7	6,228	2	247,744	83	23,209	8	298,301
1996	20,302	7	7,940	3	242,486	80	30,551	10	301,279
1997	32,259	11	6,563	2	236,999	79	22,845	8	298,666
1998	22,962	7	6,405	2	266,772	82	27,506	8	323,645
1999	50,507	15	5,856	2	255,330	75	26,787	8	338,480
2000	21,652	7	6,838	2	264,407	83	26,957	8	319,854
2001	29,467	11	5,905	2	212,668	78	24,443	9	272,483
2002	48,472	17	6,109	2	207,488	72	24,133	8	286,202
2003	36,126	12	5,296	2	238,179	78	24,304	8	303,905
2004	32,365	10	9,238	3	249,936	78	30,640	10	322,179
2005	16,162	6	6,851	3	216,715	81	27,007	10	266,735
2006	15,429	6	9,781	4	208,731	81	23,653	9	257,594
2007	37,785	13	7,296	3	213,010	75	26,570	9	284,661
2008	19,072	7	9,204	3	218,570	81	22,705	8	269,551
2009	31,193	12	7,916	3	201,323	76	23,918	9	264,350
2010	19,575	7	7,027	3	223,409	83	20,112	7	270,123
2011	25,734	9	5,655	2	206,843	75	36,838	13	275,070
2012	33,783	14	3,934	2	170,538	70	34,705	14	242,960
2013	33,602	15	5,009	2	169,025	74	21,924	10	229,560
2014	29,459	14	4,714	2	148,684	72	24,082	12	206,939
2015	21,318	10	5,687	3	151,317	71	35,719	17	214,041
2016	14,475	7	3,933	2	156,603	79	23,387	12	198,398
2017	20,905	12	2,264	1	123,466	72	24,935	15	171,570
2018	17,891	8	4,165	2	183,935	79	26,225	11	232,216
2019	8,576	5	1,514	1	158,225	85	17,706	10	186,021
2020	36,671	16	1,773	1	159,440	70	30,622	13	228,506
2021	11,486	6	2,123	1	165,480	83	20,997	10	200,086
2022	4,293	3	2,039	1	130,233	84	17,676	11	154,241
2023	4,201	4	2,340	2	87,188	80	15,629	14	109,358
2024	14,006	10	2,949	2	107,453	77	14,997	11	139,405

Table 5: Total catches by purse seine vessels in the WCPFC Statistical Area, by species

Year	Albacore		Bigeye		Skipjack		Yellowfin		Total
	Tonnes	%	Tonnes	%	Tonnes	%	Tonnes	%	
1970	317	2	591	4	7,670	47	7,644	47	16,222
1971	902	4	678	3	13,873	57	9,058	37	24,511
1972	277	1	671	2	18,343	63	9,739	34	29,030
1973	1,353	4	770	2	19,537	54	14,609	40	36,269
1974	161	1	1,079	4	11,209	38	17,098	58	29,547
1975	159	1	1,280	5	13,259	48	12,987	47	27,685
1976	1,109	3	2,008	5	22,077	54	15,576	38	40,770
1977	669	1	2,693	5	32,700	61	17,430	33	53,492
1978	1,115	2	2,932	6	32,176	62	15,818	30	52,041
1979	125	0	3,214	4	54,667	61	32,097	36	90,103
1980	329	0	3,816	3	76,108	65	36,502	31	116,755
1981	252	0	11,756	7	85,153	54	61,398	39	158,559
1982	561	0	19,017	7	145,814	57	90,099	35	255,491
1983	350	0	26,764	6	278,721	63	136,317	31	442,152
1984	3,380	1	27,068	6	287,899	62	143,930	31	462,277
1985	1,533	0	20,175	5	253,771	62	134,057	33	409,536
1986	1,542	0	30,112	6	301,300	63	141,884	30	474,838
1987	1,205	0	34,993	6	325,570	60	182,212	33	543,980
1988	1,208	0	29,255	5	434,004	71	144,529	24	608,996
1989	2,521	0	32,473	5	413,702	62	215,964	32	664,660
1990	1,995	0	43,260	5	503,247	63	247,028	31	795,530
1991	2,652	0	45,577	5	672,760	67	285,775	28	1,006,764
1992	4,104	0	56,923	6	617,897	63	296,814	30	975,738
1993	2,889	0	44,902	5	530,677	63	267,646	32	846,114
1994	2,026	0	43,224	4	652,327	67	273,986	28	971,563
1995	1,177	0	36,918	4	638,531	69	250,865	27	927,491
1996	581	0	38,923	4	651,106	73	205,833	23	896,443
1997	1,068	0	58,009	6	606,523	63	293,618	31	959,218
1998	1,554	0	60,638	5	866,959	69	328,241	26	1,257,392
1999	6,872	1	80,572	8	706,421	66	275,091	26	1,068,956
2000	2,408	0	66,280	6	797,991	70	276,615	24	1,143,294
2001	974	0	53,500	5	774,718	69	289,725	26	1,118,917
2002	3,303	0	60,976	5	932,334	74	268,839	21	1,265,452
2003	627	0	57,564	5	882,074	70	325,493	26	1,265,758
2004	7,200	1	73,313	5	950,066	70	323,660	24	1,354,239
2005	850	0	71,703	5	1,054,924	71	357,404	24	1,484,881
2006	364	0	71,338	5	1,109,716	73	343,373	23	1,524,791
2007	5,682	0	74,937	4	1,257,359	74	353,104	21	1,691,082
2008	825	0	79,564	5	1,225,679	71	431,280	25	1,737,348
2009	2,077	0	80,846	4	1,383,392	77	334,629	19	1,800,944
2010	330	0	64,189	4	1,291,770	76	351,274	21	1,707,563
2011	480	0	86,997	6	1,172,705	74	315,175	20	1,575,357
2012	4,193	0	76,329	4	1,372,607	74	398,145	22	1,851,274
2013	1,988	0	84,404	4	1,475,711	76	372,649	19	1,934,752
2014	2,009	0	81,430	4	1,616,536	78	379,904	18	2,079,879
2015	1,072	0	60,970	3	1,393,137	79	317,558	18	1,772,737
2016	3,689	0	74,056	4	1,376,372	74	408,705	22	1,862,822
2017	2,656	0	66,810	4	1,263,312	69	500,506	27	1,833,284
2018	3,024	0	77,448	4	1,450,201	76	379,664	20	1,910,337
2019	1,147	0	52,081	2	1,703,032	81	343,875	16	2,100,135
2020	6,358	0	69,181	4	1,450,419	75	399,492	21	1,925,450
2021	560	0	57,014	3	1,399,112	75	415,352	22	1,872,038
2022	180	0	60,721	3	1,462,352	78	356,877	19	1,880,130
2023	12,765	1	42,050	2	1,428,394	76	393,872	21	1,877,080
2024	3,260	0	34,562	2	1,764,160	83	329,087	15	2,131,070

Table 6: Total catches (tonnes) of albacore, bigeye, skipjack and yellowfin in the WCPFC Statistical Area by fishing nation, territory or entity

YEAR	AUSTRALIA	BELIZE	CANADA	CHINA	COOK IS	ECUADOR	EL SALVADOR	EU-SPAIN
1970	100	...	...	...	...	...	...	...
1971	100	...	...	...	...	...	...	...
1972	100	...	...	...	...	...	...	...
1973	100	...	...	...	...	...	...	...
1974	100	...	...	...	...	...	...	...
1975	2,000	...	...	...	...	...	...	...
1976	147	...	...	...	...	...	...	...
1977	131	...	...	...	...	...	...	...
1978	375	...	...	...	...	...	...	...
1979	100	...	...	...	...	...	...	...
1980	117	...	...	...	...	...	...	...
1981	357	...	...	...	...	...	...	...
1982	238	...	...	...	...	...	...	...
1983	230	...	...	...	...	...	...	...
1984	147	...	...	...	...	...	...	...
1985	18	...	...	...	...	...	...	...
1986	101	...	...	...	...	...	...	...
1987	1,455	...	...	...	...	...	...	...
1988	1,753	...	235	44	...	...	...	...
1989	2,836	...	235	144	...	...	...	...
1990	6,983	...	235	453	...	...	...	...
1991	9,380	...	235	1,007	...	...	...	...
1992	9,524	...	235	2,715	...	...	...	...
1993	7,211	...	235	6,419	...	...	...	...
1994	5,415	...	235	12,677	32	...	...	...
1995	6,288	54	235	10,586	63	...	...	...
1996	5,249	129	136	6,026	59	...	...	...
1997	7,550	77	149	3,664	...	...	...	...
1998	5,153	276	167	3,272	22	...	...	1,624
1999	7,551	211	253	7,515	56	...	...	8,614
2000	6,997	270	351	6,244	335	3,992	...	12,896
2001	5,279	7,143	206	9,948	206	1,057	599	2,402
2002	5,232	3,385	144	15,632	770	427	1,488	2,288
2003	5,809	2,697	...	42,210	2,462	1,562	73	4,659
2004	4,200	943	63	42,606	3,207	3,051	...	5,586
2005	3,093	1,056	72	62,734	3,125	5,193	...	3,453
2006	5,030	632	135	77,382	2,841	9,523	...	11,826
2007	4,404	595	27	73,698	3,266	9,187	6,026	23,749
2008	3,969	225	...	86,451	2,817	25,414	10,962	36,359
2009	3,646	190	...	119,639	2,054	8,495	8,824	26,687
2010	2,566	127	...	83,240	3,058	11,320	7,370	29,500
2011	2,924	220	1	105,276	3,636	29,184	12,226	39,468
2012	2,538	194	...	91,301	5,382	23,145	13,647	32,198
2013	2,613	252	...	121,299	1,948	21,442	13,272	45,038
2014	2,936	...	...	105,686	2,032	21,769	17,479	40,538
2015	3,916	...	...	72,794	1,764	11,377	15,301	33,272
2016	3,478	...	...	43,238	1,910	3,925	7,303	8,782
2017	2,928	...	55	60,276	3,638	13,571	4,318	11,754
2018	2,395	...	...	53,844	3,985	22,445	4,016	10,482
2019	3,014	...	...	41,333	5,312	25,135	2,939	9,986
2020	3,207	...	...	38,174	2,254	14,159	3,636	10,832
2021	2,889	...	31	31,239	5,121	16,231	5,042	13,494
2022	2,889	...	...	50,474	6,104	21,235	3,870	17,753
2023	2,549	...	...	61,413	3,635	14,911	3,903	23,339
2024	3,719	...	...	52,330	6,026	38,880	...	32,953

Table 6: Total catches (tonnes) of albacore, bigeye, skipjack and yellowfin in the WCPFC Statistical Area by fishing nation, territory or entity (*continued*)

YEAR	EU-PORTUGAL	FIJI	FRENCH POLYNESIA	FSM	INDONESIA	JAPAN	KIRIBATI	KOREA
1970	...	...	...	...	17,600	325,840	...	16,927
1971	...	...	...	...	18,100	319,721	...	16,541
1972	...	...	...	...	28,600	341,854	...	17,678
1973	...	...	...	...	32,500	418,048	...	25,938
1974	...	12	...	...	33,779	429,014	...	14,105
1975	...	11	...	...	34,378	358,037	...	29,343
1976	...	742	...	...	33,375	474,987	...	44,464
1977	...	1,711	...	...	37,235	459,318	...	43,722
1978	...	2,524	...	...	40,024	513,392	...	33,102
1979	...	3,494	696	...	50,973	466,434	...	41,915
1980	...	2,496	936	...	58,281	522,843	1,812	46,096
1981	...	5,836	1,001	...	66,579	460,646	2,376	33,311
1982	...	4,428	1,034	...	72,360	501,943	2,269	39,684
1983	...	3,741	836	...	81,685	554,560	3,406	37,589
1984	...	4,572	1,250	...	91,802	639,034	3,843	33,294
1985	...	3,946	836	...	99,918	511,606	2,531	44,292
1986	...	3,125	961	...	104,027	590,884	3,226	63,034
1987	...	3,889	878	...	131,376	504,820	2,246	91,201
1988	...	3,891	715	...	152,704	599,082	3,284	113,653
1989	...	5,189	856	...	165,050	517,619	4,094	139,905
1990	...	3,830	2,109	...	174,573	471,098	2,407	204,399
1991	...	5,298	2,335	11,339	178,542	490,677	2,036	247,950
1992	...	4,790	2,019	15,472	205,267	472,794	2,363	213,552
1993	...	4,966	2,387	16,908	188,046	516,859	2,104	150,165
1994	...	5,937	2,804	20,941	208,581	473,787	3,132	226,531
1995	...	7,009	3,343	6,758	222,269	481,106	5,423	206,176
1996	...	6,803	3,583	7,394	344,955	417,585	6,645	174,948
1997	...	4,354	4,564	8,255	256,670	507,798	7,021	188,668
1998	...	4,013	5,710	14,178	338,881	543,367	9,390	247,929
1999	...	4,075	5,200	10,881	321,618	482,046	9,793	173,489
2000	...	9,660	6,833	21,688	342,203	498,958	14,726	207,498
2001	...	11,309	7,733	17,646	314,888	439,330	5,400	216,692
2002	...	11,551	7,347	20,607	302,659	451,896	9,829	254,594
2003	...	10,854	6,309	30,829	308,731	469,809	6,898	221,079
2004	...	17,312	5,496	28,471	406,483	441,599	6,661	212,655
2005	...	15,477	5,089	28,301	247,514	481,851	9,164	237,353
2006	...	15,472	5,938	10,774	285,844	445,977	6,723	274,859
2007	...	10,042	6,408	15,440	321,890	472,401	18,019	279,585
2008	...	13,627	5,673	19,425	334,585	434,689	19,409	275,133
2009	...	16,828	6,878	26,446	388,635	400,816	34,004	310,139
2010	...	12,545	6,250	26,405	358,254	431,352	38,946	300,213
2011	7	16,307	6,028	28,785	397,442	369,726	59,611	231,570
2012	18	14,978	7,273	38,983	443,316	397,608	74,108	290,293
2013	175	12,782	6,695	30,755	526,236	378,875	77,782	245,372
2014	94	13,663	7,175	42,710	482,917	355,845	114,156	292,011
2015	21	13,085	7,403	61,207	432,078	334,108	142,623	289,434
2016	16	14,256	6,666	77,420	525,633	304,670	171,089	299,173
2017	...	17,145	6,350	89,848	470,567	303,406	159,386	265,539
2018	...	13,692	7,073	126,698	526,732	323,677	194,789	289,323
2019	...	14,421	7,373	170,072	536,221	300,724	235,570	344,669
2020	...	12,438	6,315	182,609	514,687	288,495	209,503	277,267
2021	...	9,885	7,745	154,636	546,946	323,625	188,073	255,220
2022	...	10,432	8,541	167,224	513,448	247,673	199,549	254,021
2023	...	9,314	9,650	152,741	512,006	265,536	253,025	265,935
2024	...	13,787	10,157	196,639	521,447	306,087	258,906	290,354

Table 6: Total catches (tonnes) of albacore, bigeye, skipjack and yellowfin in the WCPFC Statistical Area by fishing nation, territory or entity (*continued*)

YEAR	MARSHALL IS	MEXICO	NAURU	NEW ZEALAND	NEW CALEDONIA	NIUE	PALAU	PHILIPPINES
1970	...	...	...	50	...	...	8,082	52,000
1971	...	...	...	...	...	...	2,143	57,200
1972	...	...	...	268	...	...	1,519	60,700
1973	...	...	...	484	...	...	2,350	70,900
1974	...	...	...	899	...	...	6,808	81,187
1975	...	...	...	647	...	...	6,269	84,450
1976	...	...	...	25	...	...	5,323	73,653
1977	...	...	...	621	...	...	4,012	118,149
1978	...	...	...	1,701	...	...	9,694	87,319
1979	...	...	...	830	...	...	5,688	94,309
1980	...	...	...	1,519	...	...	6,576	77,505
1981	...	...	...	2,111	229	...	9,411	94,616
1982	...	...	...	2,436	868	...	4,053	104,047
1983	...	468	...	6,564	461	...	...	118,529
1984	...	6,601	...	7,005	150	...	...	105,217
1985	...	...	...	5,713	281	...	97	137,308
1986	...	...	...	6,793	367	...	131	145,098
1987	...	...	...	5,035	1,102	...	161	141,461
1988	...	...	...	3,923	1,092	...	157	124,785
1989	...	...	...	10,323	871	...	77	151,125
1990	...	...	...	7,120	1,730	...	88	202,215
1991	...	...	...	7,765	1,536	...	...	221,816
1992	9	...	...	4,524	1,092	...	213	165,653
1993	137	...	...	4,415	1,294	...	206	134,922
1994	48	...	...	8,513	1,355	...	184	172,556
1995	22	...	...	8,147	1,274	...	100	198,613
1996	...	...	...	10,194	1,201	...	100	205,003
1997	...	...	...	10,451	977	...	107	208,767
1998	...	...	...	15,154	1,543	...	100	235,585
1999	...	...	...	10,141	1,616	...	100	226,318
2000	7,560	...	11	18,918	1,662	...	240	234,519
2001	35,774	...	13	17,533	1,718	...	62	210,785
2002	38,952	...	7	38,573	1,926	...	4	234,060
2003	37,875	...	20	30,614	2,007	...	20	291,833
2004	46,676	...	3	33,886	2,189	6	35	302,112
2005	56,165	...	...	27,917	2,114	105	...	306,838
2006	42,349	...	...	30,823	1,807	286	...	334,610
2007	59,410	...	...	38,969	1,770	306	...	381,050
2008	33,014	...	3	33,878	1,993	435	...	420,526
2009	43,974	...	8	30,618	2,187	189	...	328,048
2010	57,225	...	4	26,950	2,488	110	...	285,593
2011	90,544	...	11	25,313	2,362	...	...	193,915
2012	74,060	...	11	23,527	2,337	...	...	233,387
2013	77,769	...	19	27,688	2,314	...	...	229,394
2014	75,896	...	19	22,907	2,429	...	...	287,189
2015	86,870	...	19	21,332	2,504	...	...	247,960
2016	62,211	...	19	13,701	2,361	...	...	214,803
2017	67,010	...	19	10,308	2,382	...	2,507	200,066
2018	75,307	...	8,898	9,483	2,280	...	2,942	156,304
2019	98,337	...	33,257	12,730	2,750	...	2,509	160,768
2020	85,214	...	97,422	9,758	2,468	...	1	215,014
2021	92,643	...	120,113	8,507	2,469	3	33	177,078
2022	88,295	...	107,783	3,449	2,905	2	24	147,488
2023	70,165	...	88,797	1,208	2,330	4	8	159,555
2024	95,084	...	87,077	2,313	2,802	15	8	201,352



Table 6: Total catches (tonnes) of albacore, bigeye, skipjack and yellowfin in the WCPFC Statistical Area by fishing nation, territory or entity (*continued*)

YEAR	PNG	RUSSIA/USSR	SAMOA	SENEGAL	SOLOMON IS	CHINESE TAIPEI	TOKELAU	TONGA
1970	2,428	...	...	...	...	33,887	...	...
1971	16,974	...	...	...	4,711	42,640	...	...
1972	13,130	...	...	...	7,905	48,612	...	...
1973	28,216	...	...	...	6,624	51,807	...	...
1974	41,630	...	...	...	10,332	37,501	...	...
1975	17,369	...	...	...	7,094	43,804	...	...
1976	32,921	...	...	...	15,763	43,546	...	...
1977	24,115	...	...	...	12,202	50,858	...	...
1978	48,859	...	...	...	18,353	46,606	...	...
1979	26,857	...	...	...	24,289	43,450	...	...
1980	33,994	...	...	...	23,241	48,323	...	...
1981	31,412	...	...	...	22,832	37,900	...	...
1982	...	...	...	...	20,071	32,644	...	205
1983	...	...	...	...	33,432	44,459	...	208
1984	2,744	...	...	...	35,615	56,406	...	218
1985	9,300	2,111	...	...	29,997	55,987	...	233
1986	...	4,175	...	...	42,249	65,658	...	252
1987	...	8,995	...	...	29,438	84,558	...	299
1988	...	6,189	...	...	40,513	117,865	...	276
1989	...	4,935	...	...	34,262	135,124	...	235
1990	...	2,126	...	...	26,613	164,641	...	192
1991	...	3,715	...	...	46,888	213,007	...	197
1992	...	2,126	...	...	30,559	263,185	...	225
1993	8	8,714	300	...	28,006	207,230	...	329
1994	1,381	6,722	736	...	33,924	223,590	...	411
1995	12,701	...	2,151	...	49,666	228,798	...	461
1996	10,572	...	2,375	...	38,697	226,436	...	579
1997	19,400	...	5,498	...	47,442	217,026	...	663
1998	50,727	...	6,820	...	48,379	305,354	...	833
1999	38,980	...	5,790	...	45,661	251,034	...	1,084
2000	68,818	...	5,389	...	12,929	279,197	...	1,161
2001	92,806	...	5,864	...	17,217	285,281	...	1,733
2002	124,705	...	4,927	...	18,537	318,298	8	1,672
2003	167,153	...	2,944	...	26,365	258,537	3	971
2004	225,440	...	1,967	...	24,904	260,646	3	388
2005	240,990	...	1,626	6	20,023	244,350	6	629
2006	242,312	...	2,564	15	29,462	255,613	6	759
2007	265,200	...	3,559	6	21,244	276,957	8	861
2008	233,350	...	2,796	...	17,377	247,300	8	592
2009	215,964	...	3,422	...	17,883	242,295	12	271
2010	208,253	...	3,090	...	26,907	256,577	4	128
2011	178,992	...	1,932	...	28,233	229,095	4	224
2012	240,055	...	2,353	...	28,635	247,237	229	171
2013	221,889	...	2,022	...	26,435	260,445	177	147
2014	236,824	...	1,102	...	62,034	275,355	86	250
2015	215,765	...	1,160	...	61,580	233,757	179	357
2016	302,693	...	1,273	...	61,064	236,116	179	400
2017	308,490	...	3,230	...	46,766	225,372	67	435
2018	313,871	...	2,191	...	61,640	241,993	55	262
2019	267,348	...	3,532	...	67,317	289,446	67	233
2020	233,680	...	2,334	...	39,834	216,217	51	182
2021	200,006	...	1,563	...	49,419	250,601	51	235
2022	218,268	...	1,990	...	49,764	255,724	19	385
2023	218,240	...	2,881	...	41,180	212,839	50	236
2024	318,147	...	565	...	68,834	273,335	77	218

Table 6: Total catches (tonnes) of albacore, bigeye, skipjack and yellowfin in the WCPFC Statistical Area by fishing nation, territory or entity (*continued*)

YEAR	TUVALU	USA	VANUATU	VIETNAM	WALLIS AND FUTUNA IS	EASTERN PACIFIC NEI	TOTAL
1970	...	493	...	...	...	...	457,407
1971	...	437	...	...	...	...	478,567
1972	...	419	...	...	...	...	520,785
1973	...	307	...	...	...	...	637,274
1974	...	347	...	...	...	...	655,714
1975	...	310	...	...	...	...	583,712
1976	...	1,071	...	...	...	...	726,017
1977	...	1,359	...	...	...	672	754,105
1978	...	1,477	...	...	...	926	804,352
1979	...	11,852	...	...	...	734	771,621
1980	...	13,483	...	...	...	114	837,336
1981	...	40,495	...	...	...	98	809,210
1982	216	75,494	...	...	...	75	862,065
1983	337	181,592	...	...	...	2,167	1,070,264
1984	540	162,380	...	...	...	10,188	1,161,006
1985	4	110,031	...	...	...	1,221	1,015,430
1986	390	123,517	...	...	...	...	1,153,988
1987	632	145,073	...	...	...	405	1,153,024
1988	1,090	122,380	...	...	...	...	1,293,631
1989	149	148,339	...	...	...	...	1,321,368
1990	90	171,301	...	...	...	...	1,442,203
1991	29	225,040	...	...	...	...	1,668,792
1992	8	209,243	...	...	...	...	1,605,568
1993	...	203,518	...	...	...	...	1,484,379
1994	...	215,683	819	...	...	...	1,625,994
1995	...	176,126	7,276	...	...	211	1,634,856
1996	...	158,218	11,498	...	...	642	1,639,027
1997	...	154,149	26,164	...	...	1,776	1,681,190
1998	...	184,278	39,423	...	...	2,934	2,065,112
1999	...	191,739	46,161	...	...	1,910	1,851,836
2000	...	135,410	38,115	33,632	...	2,925	1,973,137
2001	...	128,503	11,966	35,400	...	510	1,885,003
2002	...	136,189	28,289	37,683	...	244	2,071,923
2003	...	101,004	28,733	37,458	...	2,600	2,102,118
2004	...	79,395	66,860	50,521	...	2,014	2,275,378
2005	19	97,870	88,918	52,409	...	709	2,244,169
2006	12	81,165	76,470	52,573	...	...	2,303,782
2007	26	103,576	82,759	54,210	...	...	2,534,648
2008	22	221,185	48,179	49,903	...	...	2,579,299
2009	4,456	292,702	53,301	44,241	...	...	2,632,852
2010	10,582	256,977	39,894	41,665	...	...	2,527,593
2011	10,805	214,924	35,125	49,584	13	...	2,363,487
2012	16,469	272,718	40,569	65,556	...	...	2,682,296
2013	11,896	265,119	41,198	78,631	9	...	2,729,688
2014	6,355	323,264	32,391	80,842	7	...	2,905,961
2015	5,129	249,172	27,781	89,063	6	...	2,661,017
2016	6,677	212,678	15,754	123,076	7	...	2,720,571
2017	6,446	177,228	19,194	112,626	5	...	2,590,932
2018	11,788	208,919	24,326	120,535	11	...	2,819,956
2019	7,348	177,462	45,107	109,315	19	...	2,974,314
2020	10,298	148,665	54,884	95,540	13	...	2,775,151
2021	33,907	61,677	59,011	89,589	13	...	2,707,095
2022	41,769	67,433	75,169	97,615	4	...	2,661,300
2023	47,924	84,506	60,132	97,145	4	...	2,665,161
2024	44,374	75,683	34,817	97,613	...	...	3,033,598

Table 7: Total catches (tonnes) of albacore in the Pacific Ocean

South Pacific Ocean						North Pacific Ocean					Total
Year	Longline	Pole-and-line	Purse seine	Other	Subtotal	Longline	Pole-and-line	Purse seine	Other	Subtotal	
1970	34,775	100	50	...	34,925	19,229	28,801	21,422	1,656	71,108	106,033
1971	38,530	100	...	...	38,630	14,982	55,422	22,272	2,436	95,112	133,742
1972	39,131	122	268	...	39,521	19,025	64,341	27,521	1,659	112,546	152,067
1973	46,701	141	484	...	47,326	17,030	71,044	17,053	2,006	107,133	154,459
1974	33,039	112	898	...	34,049	14,047	78,353	21,509	1,384	115,293	149,342
1975	22,849	105	646	...	23,600	14,547	55,395	19,043	1,219	90,204	113,804
1976	28,951	100	25	...	29,076	18,510	88,036	16,183	3,217	125,946	155,022
1977	38,010	100	621	...	38,731	17,684	33,431	10,022	2,264	63,401	102,132
1978	32,881	100	1,686	...	34,667	13,851	60,827	16,636	8,064	99,378	134,045
1979	26,141	100	814	...	27,055	14,738	44,965	7,302	4,211	71,216	98,271
1980	30,947	101	1,468	...	32,516	15,635	47,124	7,768	4,707	75,234	107,750
1981	32,692	...	2,085	5	34,782	19,466	28,174	12,837	11,526	72,003	106,785
1982	28,339	1	2,434	6	30,780	18,838	30,039	6,713	13,963	69,553	100,333
1983	24,290	...	744	39	25,073	16,586	21,705	9,584	7,676	55,551	80,624
1984	20,321	2	2,773	1,589	24,685	16,992	27,043	9,354	18,670	72,059	96,744
1985	27,126	...	3,253	1,937	32,316	16,682	22,212	6,471	14,947	60,312	92,628
1986	32,641	...	2,003	1,946	36,590	14,444	16,528	4,738	10,938	46,648	83,238
1987	21,979	9	2,134	930	25,052	15,608	19,240	2,870	11,509	49,227	74,279
1988	28,288	...	4,296	5,283	37,867	15,795	6,814	4,367	18,968	45,944	83,811
1989	18,738	...	8,370	21,968	49,076	14,624	8,683	2,000	19,986	45,293	94,369
1990	21,304	245	6,975	7,538	36,062	16,615	8,647	2,905	26,159	54,326	90,388
1991	26,292	14	7,805	1,489	35,600	18,050	7,103	1,984	10,798	37,935	73,535
1992	32,014	11	6,578	65	38,668	19,991	13,888	4,934	16,580	55,393	94,061
1993	30,998	74	4,296	70	35,438	31,148	12,809	6,748	4,112	54,817	90,255
1994	34,998	67	7,164	89	42,318	30,838	26,391	13,134	3,486	73,849	116,167
1995	30,484	139	7,708	112	38,443	37,252	21,061	10,758	1,725	70,796	109,239
1996	26,663	30	7,367	199	34,259	42,038	20,296	21,849	1,070	85,253	119,512
1997	34,693	21	4,679	133	39,526	48,433	32,323	18,674	2,736	102,166	141,692
1998	43,963	36	6,258	107	50,364	48,334	23,032	20,074	3,237	94,677	145,041
1999	36,988	138	3,391	130	40,647	50,240	50,529	13,853	11,155	125,777	166,424
2000	43,284	102	6,120	474	49,980	43,457	21,641	15,245	4,985	85,328	135,308
2001	60,147	37	5,051	401	65,636	38,918	29,587	16,738	3,002	88,245	153,881
2002	73,027	18	4,495	316	77,856	35,775	48,843	16,323	6,219	107,160	185,016
2003	59,269	12	5,296	818	65,395	34,877	36,180	21,891	3,264	96,212	161,607
2004	60,623	110	4,238	499	65,470	30,672	32,484	22,176	9,213	94,545	160,015
2005	63,347	29	3,414	226	67,016	32,810	16,216	14,021	3,404	66,451	133,467
2006	64,540	29	2,763	309	67,641	35,779	15,429	18,931	1,232	71,371	139,012
2007	58,108	17	1,961	113	60,199	31,984	37,789	18,642	6,539	94,954	155,153
2008	59,903	12	3,502	160	63,577	28,478	19,060	17,902	2,953	68,393	131,970
2009	82,425	21	2,031	211	84,688	29,046	33,390	19,170	2,954	84,560	169,248
2010	82,072	14	2,139	190	84,415	28,373	19,561	19,751	1,043	68,728	153,143
2011	62,501	30	3,190	233	65,954	30,809	26,704	16,899	1,263	75,675	141,629
2012	84,486	41	2,962	248	87,737	35,534	33,757	17,259	5,175	91,725	179,462
2013	84,482	26	3,226	248	87,982	32,245	33,576	17,711	3,419	86,951	174,933
2014	65,866	26	2,382	269	68,543	28,220	29,433	18,350	3,512	79,515	148,058
2015	69,386	24	2,581	263	72,254	29,859	21,294	16,190	2,576	69,919	142,173
2016	71,529	40	2,137	333	74,039	22,533	14,442	13,749	3,717	54,441	128,480
2017	91,868	14	2,418	199	94,499	25,009	20,893	9,316	2,122	57,340	151,839
2018	78,350	16	2,684	380	81,430	22,175	17,914	10,523	3,572	54,184	135,614
2019	73,985	68	3,507	263	77,823	23,400	8,508	10,712	5,230	47,850	125,673
2020	67,508	32	4,733	331	72,604	19,439	36,638	18,005	2,368	76,450	149,054
2021	65,569	350	4,068	342	70,329	29,396	11,136	11,720	1,594	53,846	124,175
2022	84,942	65	3,777	270	89,054	19,322	11,136	21,597	1,277	53,332	142,386
2023	64,891	17	1,192	664	66,764	23,421	4,184	8,383	15,189	51,177	117,941
2024	72,070	...	1,485	735	74,290	26,396	4,185	8,625	2,752	41,958	116,247

Table 8: Total catches (tonnes) of bigeye in the Pacific Ocean

Western Pacific Ocean						Eastern Pacific Ocean					Total
Year	Longline	Pole-and-line	Purse seine	Other	Subtotal	Longline	Pole-and-line	Purse seine	Other	Subtotal	
1970	34,348	3,178	591	2,968	41,085	33,341	...	2,411	...	35,752	76,837
1971	36,798	1,862	678	3,243	42,581	29,804	75	4,359	18	34,256	76,837
1972	49,334	1,762	671	3,690	55,457	36,128	126	3,971	...	40,225	95,682
1973	40,285	1,258	770	4,449	46,762	50,777	236	3,342	...	54,355	101,117
1974	41,787	1,039	1,079	4,987	48,892	36,961	...	1,554	...	38,515	87,407
1975	57,623	1,334	1,280	5,212	65,449	41,733	36	6,574	...	48,343	113,792
1976	68,514	3,423	2,008	4,354	78,299	54,290	75	17,212	7	71,584	149,883
1977	66,249	3,325	2,693	5,954	78,221	74,086	2	11,161	...	85,249	163,470
1978	50,502	3,337	2,932	4,331	61,102	70,659	...	18,539	...	89,198	150,300
1979	57,319	2,540	3,214	4,966	68,039	55,435	...	12,097	1	67,533	135,572
1980	57,233	2,916	3,816	4,086	68,051	64,335	...	21,938	130	86,403	154,454
1981	42,331	3,382	11,756	4,624	62,093	53,416	...	14,921	7	68,344	130,437
1982	45,896	4,993	19,017	4,142	74,048	53,365	42	6,939	3	60,349	134,397
1983	42,453	5,077	26,764	4,704	78,998	60,043	39	4,575	37	64,694	143,692
1984	47,516	4,557	27,068	5,047	84,188	46,394	2	8,861	11	55,268	139,456
1985	52,454	5,529	20,175	6,175	84,333	66,325	2	6,056	15	72,398	156,731
1986	47,926	4,133	30,112	6,346	88,517	102,425	...	2,686	74	105,185	193,702
1987	60,147	4,602	34,993	5,552	105,294	100,121	...	1,177	49	101,347	206,641
1988	50,701	5,890	29,255	6,803	92,649	72,758	5	1,535	15	74,313	166,962
1989	54,773	6,131	32,473	7,447	100,824	70,963	...	2,030	1	72,994	173,818
1990	66,946	5,985	43,260	8,121	124,312	98,871	...	5,921	59	104,851	229,163
1991	48,873	3,929	45,577	9,346	107,725	104,195	31	4,870	25	109,121	216,846
1992	64,017	4,055	56,923	6,200	131,195	84,808	...	7,179	13	92,000	223,195
1993	58,343	4,505	44,902	5,669	113,419	72,498	...	9,657	35	82,190	195,609
1994	68,327	5,251	43,224	7,822	124,624	71,360	...	34,899	806	107,065	231,689
1995	58,830	6,228	36,918	8,409	110,385	58,269	...	45,321	1,369	104,959	215,344
1996	49,951	7,940	38,923	10,354	107,168	46,958	...	61,311	748	109,017	216,185
1997	60,995	6,563	58,009	7,928	133,495	52,580	...	64,272	20	116,872	250,367
1998	76,232	6,405	60,229	9,549	152,415	46,375	...	44,129	628	91,132	243,547
1999	67,967	5,856	79,640	9,061	162,524	36,450	...	51,158	538	88,146	250,670
2000	64,810	6,838	66,047	10,399	148,094	47,605	...	94,640	253	142,498	290,592
2001	65,687	5,905	53,428	9,439	134,459	68,755	...	61,156	19	129,930	264,389
2002	81,493	6,109	60,372	9,984	157,958	74,424	...	57,440	12	131,876	289,834
2003	70,567	5,296	56,228	11,380	143,471	59,776	...	54,174	21	113,971	257,442
2004	87,771	9,238	72,798	12,792	182,599	43,483	...	67,592	194	111,269	293,868
2005	70,806	6,851	71,348	5,743	154,748	40,694	...	67,895	25	108,614	263,362
2006	78,879	9,781	70,305	6,421	165,386	31,771	...	83,837	40	115,648	281,034
2007	76,873	7,296	74,094	7,102	165,365	29,876	...	63,451	44	93,371	258,736
2008	77,414	9,204	78,273	6,426	171,317	26,207	...	75,028	28	101,263	272,580
2009	76,418	7,916	79,569	5,391	169,294	31,422	...	76,800	15	108,237	277,531
2010	64,218	7,027	64,227	4,324	139,796	37,086	...	57,753	1,804	96,643	236,439
2011	69,824	5,655	86,789	5,851	168,119	32,318	...	56,512	...	88,830	256,949
2012	75,054	3,932	75,167	13,092	167,245	35,911	...	66,020	8	101,939	269,184
2013	55,711	5,005	81,808	12,259	154,783	36,081	...	52,524	17	88,622	243,405
2014	69,464	4,712	79,563	15,307	169,046	35,355	...	54,495	17	89,867	258,913
2015	66,671	5,686	58,410	14,942	145,709	41,709	...	62,913	21	104,643	250,352
2016	57,853	3,931	73,323	21,549	156,656	35,656	...	56,731	22	92,409	249,065
2017	51,631	2,263	65,436	11,265	130,595	35,650	...	66,973	42	102,665	233,260
2018	62,153	4,163	76,754	11,334	154,404	29,786	...	64,522	18	94,326	248,730
2019	63,727	1,512	51,734	14,835	131,808	27,786	...	69,224	18	97,028	228,836
2020	50,597	1,771	68,894	21,376	142,638	25,964	1	78,784	44	104,793	247,431
2021	47,898	2,122	57,081	20,637	127,738	21,968	...	57,674	6	79,648	207,386
2022	49,832	2,037	59,573	25,472	136,914	20,684	...	57,674	6	78,364	215,278
2023	51,069	2,338	40,789	32,727	126,924	20,684	...	57,674	6	78,364	205,288
2024	40,210	2,949	34,179	51,134	128,472	20,684	...	57,674	22	78,380	206,852

Table 9: Total catches (tonnes) of skipjack in the Pacific Ocean

Western Pacific Ocean						Eastern Pacific Ocean					Total
Year	Longline	Pole-and-line	Purse seine	Other	Subtotal	Longline	Pole-and-line	Purse seine	Other	Subtotal	
1970	1,260	197,873	7,670	35,215	242,018	164	7,470	47,466	7,234	62,334	304,352
1971	1,440	180,945	13,873	32,429	228,687	187	11,679	94,502	6,702	113,070	341,757
1972	1,524	172,827	18,343	45,368	238,062	242	6,556	29,804	1,144	37,746	275,808
1973	1,838	253,217	19,537	54,435	329,027	207	9,135	39,247	638	49,227	378,254
1974	2,088	289,202	11,209	54,022	356,521	95	7,629	79,418	510	87,652	444,173
1975	1,893	218,271	13,259	55,019	288,442	94	13,848	120,358	526	134,826	423,268
1976	2,056	276,582	22,077	56,107	356,822	131	11,256	124,957	705	137,049	493,871
1977	3,102	294,641	32,700	71,240	401,683	112	7,522	84,603	1,960	94,197	495,880
1978	3,219	331,401	32,176	81,229	448,025	61	6,047	172,294	1,324	179,726	627,751
1979	2,215	285,859	54,667	66,142	408,883	33	6,346	133,695	1,462	141,536	550,419
1980	630	333,597	76,108	38,296	448,631	26	5,225	130,912	1,965	138,128	586,759
1981	754	296,065	85,153	44,241	426,213	20	5,906	119,165	930	126,021	552,234
1982	970	264,726	145,814	48,102	459,612	28	3,760	100,499	410	104,697	564,309
1983	2,143	298,928	278,721	49,660	629,452	28	4,387	56,851	737	62,003	691,455
1984	867	366,811	287,899	48,408	703,985	32	2,884	59,859	868	63,643	767,628
1985	1,100	238,932	253,771	53,906	547,709	44	946	50,829	227	52,046	599,755
1986	911	322,665	301,300	64,965	689,841	58	1,921	65,634	190	67,803	757,644
1987	2,320	292,142	325,570	58,702	638,734	37	2,233	64,019	214	66,503	705,237
1988	1,930	295,325	434,004	58,577	789,836	26	4,325	87,113	689	92,153	881,989
1989	2,502	275,088	413,702	58,681	749,973	28	2,940	94,934	1,047	98,949	848,922
1990	358	211,573	503,247	94,759	809,937	41	823	74,369	1,915	77,148	887,085
1991	882	259,778	672,760	91,725	1,025,145	36	1,717	62,228	1,945	65,926	1,091,071
1992	431	218,765	617,897	91,057	928,150	24	1,957	84,283	1,054	87,318	1,015,468
1993	569	255,152	530,677	78,057	864,455	61	3,772	83,830	2,317	89,980	954,435
1994	353	209,636	652,327	77,192	939,508	73	3,240	70,126	804	74,243	1,013,751
1995	572	247,744	638,521	90,641	977,478	77	5,253	127,047	1,988	134,365	1,111,843
1996	370	242,486	651,096	105,749	999,701	52	2,555	103,973	1,313	107,893	1,107,594
1997	497	236,999	606,523	95,478	939,497	135	3,260	153,456	231	157,082	1,096,579
1998	1,949	266,772	865,409	110,002	1,244,132	294	1,684	140,631	531	143,140	1,387,272
1999	1,445	255,330	707,267	106,238	1,070,280	201	2,044	261,565	1,594	265,404	1,335,684
2000	506	264,407	798,648	130,578	1,194,139	68	231	204,307	67	204,673	1,398,812
2001	1,197	212,668	774,898	111,951	1,100,714	1,214	448	143,561	34	145,257	1,245,971
2002	836	207,488	931,138	114,172	1,253,634	261	616	153,303	119	154,299	1,407,933
2003	1,130	238,179	879,570	126,276	1,245,155	634	638	274,529	2,777	278,578	1,523,733
2004	1,276	249,936	950,372	153,181	1,354,765	713	528	198,664	1,105	201,010	1,555,775
2005	1,021	216,715	1,054,977	145,392	1,418,105	231	1,300	263,229	1,780	266,540	1,684,645
2006	1,450	208,220	1,108,447	161,249	1,479,366	224	435	296,269	986	297,914	1,777,280
2007	1,136	212,720	1,255,708	193,789	1,663,353	238	276	208,296	1,065	209,875	1,873,228
2008	773	218,070	1,227,821	202,403	1,649,067	1,185	501	296,603	1,163	299,452	1,948,519
2009	1,083	200,692	1,385,705	173,792	1,761,272	1,584	151	230,527	1,112	233,374	1,994,646
2010	1,003	222,948	1,293,265	162,999	1,680,215	1,815	47	147,192	2,964	152,018	1,832,233
2011	1,085	206,542	1,175,765	153,414	1,536,806	1,385	24	276,035	851	278,295	1,815,101
2012	1,899	170,234	1,372,252	187,559	1,731,944	2,381	303	266,215	1,040	269,939	2,001,883
2013	1,062	168,856	1,467,028	194,467	1,831,413	2,027	167	272,500	774	275,468	2,106,881
2014	1,383	148,452	1,617,320	217,955	1,985,110	195	167	261,977	774	263,113	2,248,223
2015	1,821	151,156	1,389,776	245,792	1,788,545	188	1	328,907	1,256	330,352	2,118,897
2016	5,562	156,503	1,375,451	251,244	1,788,760	213	...	337,562	717	338,492	2,127,252
2017	2,486	123,308	1,263,559	220,617	1,609,970	186	...	324,759	879	325,824	1,935,794
2018	3,982	183,851	1,449,575	205,990	1,843,398	1,221	...	288,820	407	290,448	2,133,846
2019	5,037	158,161	1,703,598	177,681	2,044,477	263	...	347,405	408	348,076	2,392,553
2020	1,876	159,398	1,450,716	153,021	1,765,011	268	2	295,961	362	296,593	2,061,604
2021	2,279	165,435	1,398,685	149,786	1,716,185	227	...	325,020	11	325,258	2,041,443
2022	2,054	130,147	1,459,978	144,291	1,736,470	199	...	325,020	11	325,230	2,061,700
2023	2,141	87,098	1,424,973	185,129	1,699,341	199	...	325,020	11	325,230	2,024,571
2024	4,629	107,460	1,753,203	216,114	2,081,406	199	...	325,020	393	325,612	2,407,018

Table 10: Total catches (tonnes) of yellowfin in the Pacific Ocean

Western Pacific Ocean						Eastern Pacific Ocean					Total
Year	Longline	Pole-and-line	Purse seine	Other	Subtotal	Longline	Pole-and-line	Purse seine	Other	Subtotal	
1970	55,481	4,606	7,644	30,933	98,664	12,643	4,260	139,385	4,850	161,138	259,802
1971	56,927	5,248	9,058	32,894	104,127	8,013	5,300	104,863	2,482	120,658	224,785
1972	60,251	7,465	9,739	37,506	114,961	16,859	6,060	164,297	1,060	188,276	303,237
1973	61,818	7,458	14,609	43,828	127,713	11,697	3,933	194,200	661	210,491	338,204
1974	57,490	6,582	17,098	49,441	130,611	7,190	8,188	191,626	1,230	208,234	338,845
1975	68,416	7,801	12,987	51,029	140,233	10,640	5,629	183,028	567	199,864	340,097
1976	76,363	17,186	15,576	42,766	151,891	15,632	3,280	215,108	358	234,378	386,269
1977	92,680	15,257	17,430	58,070	183,437	12,355	1,841	184,922	248	199,366	382,803
1978	108,428	12,767	15,818	39,401	176,414	10,188	3,888	158,801	1,103	173,980	350,394
1979	104,932	11,638	32,097	49,565	198,232	11,473	4,789	170,650	212	187,124	385,356
1980	122,611	15,142	36,502	43,435	217,690	13,477	1,481	143,042	862	158,862	376,552
1981	95,574	22,044	61,398	47,992	227,008	7,999	1,477	168,234	800	178,510	405,518
1982	85,175	17,123	90,099	42,854	235,251	10,961	1,538	114,755	280	127,534	362,785
1983	87,734	17,184	136,317	48,207	289,442	10,895	4,007	83,929	849	99,680	389,122
1984	74,210	17,633	143,930	54,279	290,052	10,345	2,991	135,785	344	149,465	439,517
1985	77,674	22,717	134,057	63,398	297,846	13,198	1,070	211,459	212	225,939	523,785
1986	66,594	17,970	141,884	65,429	291,877	22,808	2,537	260,512	214	286,071	577,948
1987	72,687	19,044	182,212	59,994	333,937	18,911	5,107	262,008	138	286,164	620,101
1988	84,257	20,566	144,529	71,654	321,006	14,660	3,723	277,293	752	296,428	617,434
1989	69,921	22,133	215,964	75,487	383,505	17,032	4,145	277,996	263	299,436	682,941
1990	74,842	20,769	247,028	86,916	429,555	34,633	2,676	263,253	960	301,522	731,077
1991	58,565	19,182	285,775	96,967	460,489	30,899	2,856	231,257	958	265,970	726,459
1992	74,428	23,043	296,814	62,224	456,509	18,646	3,789	228,121	1,958	252,514	709,023
1993	69,372	20,486	267,646	60,594	418,098	24,009	4,951	219,492	3,034	251,486	669,584
1994	76,880	21,378	273,986	76,978	449,222	30,026	3,625	208,408	1,487	243,546	692,768
1995	85,200	23,209	250,865	83,531	442,805	20,596	1,268	215,434	2,066	239,364	682,169
1996	88,218	30,551	205,833	101,067	425,669	16,608	3,762	238,607	1,639	260,616	686,285
1997	77,963	22,845	293,618	86,593	481,019	22,163	4,418	244,878	600	272,059	753,078
1998	76,122	27,506	327,798	105,419	536,845	15,336	5,085	253,959	1,529	275,909	812,754
1999	68,028	26,787	274,611	105,222	474,648	11,682	1,783	281,920	2,706	298,091	772,739
2000	90,036	26,957	276,027	113,008	506,028	23,855	2,431	255,231	1,109	282,626	788,654
2001	88,667	24,443	289,617	101,774	504,501	29,608	3,916	382,702	520	416,746	921,247
2002	89,203	24,133	268,299	108,360	489,995	25,531	950	412,507	549	439,537	929,532
2003	89,424	24,304	324,439	125,759	563,926	25,174	470	381,107	1,145	407,896	971,822
2004	99,416	30,640	323,676	142,156	595,888	18,779	1,884	269,597	627	290,887	886,775
2005	82,191	27,007	356,997	85,627	551,822	11,946	1,821	268,102	1,852	283,721	835,543
2006	78,298	23,544	341,815	93,419	537,076	10,209	686	166,629	1,458	178,982	716,058
2007	78,566	26,460	351,736	109,168	565,930	8,065	894	170,016	1,439	180,414	746,344
2008	82,927	22,639	429,564	109,235	644,365	9,820	812	185,057	941	196,630	840,995
2009	97,649	23,859	333,339	104,067	558,914	10,444	709	236,771	995	248,919	807,833
2010	94,964	20,077	349,663	99,903	564,607	8,338	460	251,008	2,641	262,447	827,054
2011	95,619	36,772	311,627	86,928	530,946	8,048	276	206,851	806	215,981	746,927
2012	84,971	34,638	399,278	106,810	625,697	12,953	400	198,017	1,236	212,606	838,303
2013	75,106	21,834	370,704	110,823	578,467	10,781	754	220,038	865	232,438	810,905
2014	98,011	23,982	379,315	116,954	618,262	8,649	754	241,158	865	251,426	869,688
2015	100,726	35,580	314,001	138,821	589,128	10,621	15	245,727	3,583	259,946	849,074
2016	86,416	23,234	408,596	142,045	660,291	9,803	5	242,118	2,876	254,802	915,093
2017	80,829	24,793	501,284	103,296	710,202	10,640	4	210,981	2,685	224,310	934,512
2018	92,516	26,052	379,640	198,498	696,706	12,573	...	238,981	1,412	252,966	949,672
2019	99,340	17,583	343,774	222,007	682,704	11,917	...	228,313	1,397	241,627	924,331
2020	70,053	30,486	398,722	227,590	726,851	11,583	3	218,749	772	231,107	957,958
2021	70,320	20,835	414,283	252,770	758,208	9,510	...	253,484	82	263,076	1,021,284
2022	82,302	17,537	354,737	221,436	676,012	6,655	...	253,484	82	260,221	936,233
2023	80,027	15,483	392,637	224,675	712,822	6,655	...	253,484	82	260,221	973,043
2024	72,202	15,011	328,607	259,999	675,819	6,655	...	253,484	765	260,904	936,723

Table 11: Total catches of albacore, bigeye, skipjack and yellowfin in the Western Pacific Ocean

Year	Albacore		Bigeye		Skipjack		Yellowfin		Total
	Tonnes	%	Tonnes	%	Tonnes	%	Tonnes	%	
1970	71,496	16	41,085	9	242,018	53	98,664	22	453,263
1971	96,125	20	42,581	9	228,687	48	104,127	22	471,520
1972	106,697	21	55,457	11	238,062	46	114,961	22	515,177
1973	129,538	20	46,762	7	329,027	52	127,713	20	633,040
1974	112,827	17	48,892	8	356,521	55	130,611	20	648,851
1975	83,864	15	65,449	11	288,442	50	140,233	24	577,988
1976	131,620	18	78,299	11	356,822	50	151,891	21	718,632
1977	79,436	11	78,221	11	401,683	54	183,437	25	742,777
1978	105,771	13	61,102	8	448,025	57	176,414	22	791,312
1979	84,878	11	68,039	9	408,883	54	198,232	26	760,032
1980	94,123	11	68,051	8	448,631	54	217,690	26	828,495
1981	86,385	11	62,093	8	426,213	53	227,008	28	801,699
1982	86,847	10	74,048	9	459,612	54	235,251	27	855,758
1983	64,112	6	78,998	7	629,452	59	289,442	27	1,062,004
1984	73,452	6	84,188	7	703,985	61	290,052	25	1,151,677
1985	76,034	8	84,333	8	547,709	54	297,846	30	1,005,922
1986	71,045	6	88,517	8	689,841	60	291,877	26	1,141,280
1987	60,625	5	105,294	9	638,734	56	333,937	29	1,138,590
1988	62,279	5	92,649	7	789,836	62	321,006	25	1,265,770
1989	69,949	5	100,824	8	749,973	58	383,505	29	1,304,251
1990	60,989	4	124,312	9	809,937	57	429,555	30	1,424,793
1991	56,449	3	107,725	7	1,025,145	62	460,489	28	1,649,808
1992	62,483	4	131,195	8	928,150	59	456,509	29	1,578,337
1993	71,728	5	113,419	8	864,455	59	418,098	28	1,467,700
1994	91,696	6	124,624	8	939,508	59	449,222	28	1,605,050
1995	89,851	6	110,385	7	977,478	60	442,805	27	1,620,519
1996	88,874	5	107,168	7	999,701	62	425,669	26	1,621,412
1997	109,898	7	133,495	8	939,497	56	481,019	29	1,663,909
1998	107,480	5	152,415	7	1,244,132	61	536,845	26	2,040,872
1999	128,067	7	162,524	9	1,070,280	58	474,648	26	1,835,519
2000	98,546	5	148,094	8	1,194,139	61	506,028	26	1,946,807
2001	115,930	6	134,459	7	1,100,714	59	504,501	27	1,855,604
2002	142,087	7	157,958	8	1,253,634	61	489,995	24	2,043,674
2003	111,800	5	143,471	7	1,245,155	60	563,926	27	2,064,352
2004	116,662	5	182,599	8	1,354,765	60	595,888	26	2,249,914
2005	103,287	5	154,748	7	1,418,105	64	551,822	25	2,227,962
2006	103,061	5	165,386	7	1,479,366	65	537,076	24	2,284,889
2007	122,312	5	165,365	7	1,663,353	66	565,930	22	2,516,960
2008	100,984	4	171,317	7	1,649,067	64	644,365	25	2,565,733
2009	130,894	5	169,294	6	1,761,272	67	558,914	21	2,620,374
2010	120,316	5	139,796	6	1,680,215	67	564,607	23	2,504,934
2011	107,845	5	168,119	7	1,536,806	66	530,946	23	2,343,716
2012	136,613	5	167,245	6	1,731,944	65	625,697	24	2,661,499
2013	128,595	5	154,783	6	1,831,413	68	578,467	21	2,693,258
2014	113,107	4	169,046	6	1,985,110	69	618,262	21	2,885,525
2015	106,820	4	145,709	6	1,788,545	68	589,128	22	2,630,202
2016	87,753	3	156,656	6	1,788,760	66	660,291	25	2,693,460
2017	117,132	5	130,595	5	1,609,970	63	710,202	28	2,567,899
2018	102,711	4	154,404	6	1,843,398	66	696,706	25	2,797,219
2019	94,683	3	131,808	4	2,044,477	69	682,704	23	2,953,672
2020	119,085	4	142,638	5	1,765,011	64	726,851	26	2,753,585
2021	79,205	3	127,738	5	1,716,185	64	758,208	28	2,681,336
2022	84,656	3	136,914	5	1,736,470	66	676,012	26	2,634,052
2023	95,749	4	126,924	5	1,699,341	64	712,822	27	2,634,835
2024	101,228	3	128,472	4	2,081,406	70	675,819	23	2,986,924

Table 12: Total catches of albacore, bigeye, skipjack and yellowfin in the Eastern Pacific Ocean

Year	Albacore		Bigeye		Skipjack		Yellowfin		Total
	Tonnes	%	Tonnes	%	Tonnes	%	Tonnes	%	
1970	32,834	11	35,752	12	62,334	21	161,138	55	292,058
1971	31,686	11	34,256	11	113,070	38	120,658	40	299,670
1972	34,890	12	40,225	13	37,746	13	188,276	63	301,137
1973	22,607	7	54,355	16	49,227	15	210,491	63	336,680
1974	29,511	8	38,515	11	87,652	24	208,234	57	363,912
1975	24,202	6	48,343	12	134,826	33	199,864	49	407,235
1976	22,856	5	71,584	15	137,049	29	234,378	50	465,867
1977	24,024	6	85,249	21	94,197	23	199,366	49	402,836
1978	31,108	7	89,198	19	179,726	38	173,980	37	474,012
1979	10,953	3	67,533	17	141,536	35	187,124	46	407,146
1980	11,569	3	86,403	22	138,128	35	158,862	40	394,962
1981	20,283	5	68,344	17	126,021	32	178,510	45	393,158
1982	12,522	4	60,349	20	104,697	34	127,534	42	305,102
1983	15,729	6	64,694	27	62,003	26	99,680	41	242,106
1984	21,857	8	55,268	19	63,643	22	149,465	51	290,233
1985	14,841	4	72,398	20	52,046	14	225,939	62	365,224
1986	11,284	2	105,185	22	67,803	14	286,071	61	470,343
1987	12,977	3	101,347	22	66,503	14	286,164	61	466,991
1988	15,771	3	74,313	16	92,153	19	296,428	62	478,665
1989	9,501	2	72,994	15	98,949	21	299,436	62	480,880
1990	10,850	2	104,851	21	77,148	16	301,522	61	494,371
1991	11,481	3	109,121	24	65,926	15	265,970	59	452,498
1992	23,075	5	92,000	20	87,318	19	252,514	56	454,907
1993	15,605	4	82,190	19	89,980	20	251,486	57	439,261
1994	20,618	5	107,065	24	74,243	17	243,546	55	445,472
1995	14,075	3	104,959	21	134,365	27	239,364	49	492,763
1996	16,112	3	109,017	22	107,893	22	260,616	53	493,638
1997	17,279	3	116,872	21	157,082	28	272,059	48	563,292
1998	25,913	5	91,132	17	143,140	27	275,909	51	536,094
1999	26,464	4	88,146	13	265,404	39	298,091	44	678,105
2000	23,275	4	142,498	22	204,673	31	282,626	43	653,072
2001	33,336	5	129,930	18	145,257	20	416,746	57	725,269
2002	30,154	4	131,876	17	154,299	20	439,537	58	755,866
2003	45,538	5	113,971	13	278,578	33	407,896	48	845,983
2004	40,834	6	111,269	17	201,010	31	290,887	45	644,000
2005	25,156	4	108,614	16	266,540	39	283,721	41	684,031
2006	33,096	5	115,648	18	297,914	48	178,982	29	625,640
2007	31,204	6	93,371	18	209,875	41	180,414	35	514,864
2008	26,882	4	101,263	16	299,452	48	196,630	31	624,227
2009	31,504	5	108,237	17	233,374	38	248,919	40	622,034
2010	34,465	6	96,643	18	152,018	28	262,447	48	545,573
2011	33,260	5	88,830	14	278,295	45	215,981	35	616,366
2012	42,309	7	101,939	16	269,939	43	212,606	34	626,793
2013	43,934	7	88,622	14	275,468	43	232,438	36	640,462
2014	47,768	7	89,867	14	263,113	40	251,426	39	652,174
2015	46,080	6	104,643	14	330,352	45	259,946	35	741,021
2016	41,362	6	92,409	13	338,492	47	254,802	35	727,065
2017	36,055	5	102,665	15	325,824	47	224,310	33	688,854
2018	36,902	5	94,326	14	290,448	43	252,966	37	674,642
2019	32,709	5	97,028	13	348,076	48	241,627	34	719,440
2020	30,319	5	104,793	16	296,593	45	231,107	35	662,812
2021	38,417	5	79,648	11	325,258	46	263,076	37	706,399
2022	38,746	6	78,364	11	325,230	46	260,221	37	702,561
2023	38,746	6	78,364	11	325,230	46	260,221	37	702,561
2024	38,964	6	78,380	11	325,612	46	260,904	37	703,860



Table 13: Total catches of albacore, bigeye, skipjack and yellowfin in the Pacific Ocean

Year	Albacore		Bigeye		Skipjack		Yellowfin		Total
	Tonnes	%	Tonnes	%	Tonnes	%	Tonnes	%	
1970	106,033	14	76,837	10	304,352	41	259,802	35	747,024
1971	133,742	17	76,837	10	341,757	44	224,785	29	777,121
1972	152,067	18	95,682	12	275,808	33	303,237	37	826,794
1973	154,459	16	101,117	10	378,254	39	338,204	35	972,034
1974	149,342	15	87,407	9	444,173	44	338,845	33	1,019,767
1975	113,804	11	113,792	11	423,268	43	340,097	34	990,961
1976	155,022	13	149,883	13	493,871	42	386,269	33	1,185,045
1977	102,132	9	163,470	14	495,880	43	382,803	33	1,144,285
1978	134,045	11	150,300	12	627,751	50	350,394	28	1,262,490
1979	98,271	8	135,572	12	550,419	47	385,356	33	1,169,618
1980	107,750	9	154,454	13	586,759	48	376,552	31	1,225,515
1981	106,785	9	130,437	11	552,234	46	405,518	34	1,194,974
1982	100,333	9	134,397	12	564,309	49	362,785	31	1,161,824
1983	80,624	6	143,692	11	691,455	53	389,122	30	1,304,893
1984	96,744	7	139,456	10	767,628	53	439,517	30	1,443,345
1985	92,628	7	156,731	11	599,755	44	523,785	38	1,372,899
1986	83,238	5	193,702	12	757,644	47	577,948	36	1,612,532
1987	74,279	5	206,641	13	705,237	44	620,101	39	1,606,258
1988	83,811	5	166,962	10	881,989	50	617,434	35	1,750,196
1989	94,369	5	173,818	10	848,922	47	682,941	38	1,800,050
1990	90,388	5	229,163	12	887,085	46	731,077	38	1,937,713
1991	73,535	3	216,846	10	1,091,071	52	726,459	34	2,107,911
1992	94,061	5	223,195	11	1,015,468	50	709,023	35	2,041,747
1993	90,255	5	195,609	10	954,435	50	669,584	35	1,909,883
1994	116,167	6	231,689	11	1,013,751	49	692,768	34	2,054,375
1995	109,239	5	215,344	10	1,111,843	52	682,169	32	2,118,595
1996	119,512	6	216,185	10	1,107,594	52	686,285	32	2,129,576
1997	141,692	6	250,367	11	1,096,579	49	753,078	34	2,241,716
1998	145,041	6	243,547	9	1,387,272	54	812,754	31	2,588,614
1999	166,424	7	250,670	10	1,335,684	53	772,739	31	2,525,517
2000	135,308	5	290,592	11	1,398,812	54	788,654	30	2,613,366
2001	153,881	6	264,389	10	1,245,971	48	921,247	36	2,585,488
2002	185,016	7	289,834	10	1,407,933	50	929,532	33	2,812,315
2003	161,607	6	257,442	9	1,523,733	52	971,822	33	2,914,604
2004	160,015	6	293,868	10	1,555,775	54	886,775	31	2,896,433
2005	133,467	5	263,362	9	1,684,645	58	835,543	29	2,917,017
2006	139,012	5	281,034	10	1,777,280	61	716,058	25	2,913,384
2007	155,153	5	258,736	9	1,873,228	62	746,344	25	3,033,461
2008	131,970	4	272,580	9	1,948,519	61	840,995	26	3,194,064
2009	169,248	5	277,531	9	1,994,646	61	807,833	25	3,249,258
2010	153,143	5	236,439	8	1,832,233	60	827,054	27	3,048,869
2011	141,629	5	256,949	9	1,815,101	61	746,927	25	2,960,606
2012	179,462	5	269,184	8	2,001,883	61	838,303	25	3,288,832
2013	174,933	5	243,405	7	2,106,881	63	810,905	24	3,336,124
2014	148,058	4	258,913	7	2,248,223	64	869,688	25	3,524,882
2015	142,173	4	250,352	7	2,118,897	63	849,074	25	3,360,496
2016	128,480	4	249,065	7	2,127,252	62	915,093	27	3,419,890
2017	151,839	5	233,260	7	1,935,794	59	934,512	29	3,255,405
2018	135,614	4	248,730	7	2,133,846	62	949,672	27	3,467,862
2019	125,673	3	228,836	6	2,392,553	65	924,331	25	3,671,393
2020	149,054	4	247,431	7	2,061,604	60	957,958	28	3,416,047
2021	124,175	4	207,386	6	2,041,443	60	1,021,284	30	3,394,288
2022	142,386	4	215,278	6	2,061,700	61	936,233	28	3,355,596
2023	117,941	4	205,288	6	2,024,571	61	973,043	29	3,320,843
2024	116,247	3	206,852	6	2,407,018	66	936,723	26	3,666,840

Table 14: Global catches of albacore, bigeye, skipjack and yellowfin

Year	Albacore		Bigeye		Skipjack		Yellowfin		Total
	Tonnes	%	Tonnes	%	Tonnes	%	Tonnes	%	
1970	189,463	17	144,625	13	397,502	36	374,636	34	1,106,226
1971	228,382	19	153,542	13	461,877	39	339,961	29	1,183,762
1972	246,756	20	161,256	13	389,536	31	439,874	36	1,237,422
1973	251,629	18	174,016	12	506,043	36	472,488	34	1,404,176
1974	248,632	16	178,143	12	615,538	40	486,620	32	1,528,933
1975	184,759	13	211,237	15	518,773	37	506,034	36	1,420,803
1976	247,128	15	223,066	14	614,017	37	554,489	34	1,638,700
1977	190,087	11	252,937	15	647,596	39	579,272	35	1,669,892
1978	225,425	13	252,445	14	778,010	43	542,359	30	1,798,239
1979	190,692	11	215,055	13	688,704	42	564,828	34	1,659,279
1980	183,325	11	252,557	14	753,244	43	554,467	32	1,743,593
1981	181,319	10	232,881	13	739,513	42	610,266	35	1,763,979
1982	198,363	11	251,147	14	778,553	43	587,190	32	1,815,253
1983	167,670	9	252,815	13	899,713	46	621,455	32	1,941,653
1984	173,543	8	254,070	12	1,008,772	48	661,775	32	2,098,160
1985	179,290	8	287,168	13	860,372	40	805,734	38	2,132,564
1986	204,722	8	316,318	13	1,031,065	43	871,254	36	2,423,359
1987	187,979	8	327,494	13	993,817	41	928,352	38	2,437,642
1988	180,403	7	306,959	11	1,227,886	46	969,149	36	2,684,397
1989	178,371	6	321,300	12	1,215,499	44	1,051,150	38	2,766,320
1990	192,519	6	387,523	13	1,261,380	42	1,166,341	39	3,007,763
1991	158,962	5	390,122	12	1,557,186	48	1,127,653	35	3,233,923
1992	185,530	6	394,338	12	1,472,023	45	1,189,522	37	3,241,413
1993	182,278	6	409,112	12	1,472,605	45	1,224,508	37	3,288,503
1994	212,435	6	474,422	14	1,540,761	45	1,191,589	35	3,419,207
1995	199,861	6	460,989	13	1,612,568	47	1,169,209	34	3,442,627
1996	210,053	6	465,647	14	1,577,870	46	1,183,192	34	3,436,762
1997	228,831	6	507,759	14	1,582,112	45	1,231,471	35	3,550,173
1998	241,959	6	495,905	13	1,879,555	48	1,272,108	33	3,889,527
1999	271,143	7	530,110	13	1,928,383	48	1,269,219	32	3,998,855
2000	244,202	6	523,813	13	1,975,478	49	1,257,496	31	4,000,989
2001	267,522	7	479,003	12	1,833,991	46	1,402,943	35	3,983,459
2002	279,786	7	507,661	12	2,012,550	48	1,410,619	34	4,210,616
2003	249,409	6	478,766	11	2,148,672	49	1,539,870	35	4,416,717
2004	244,581	5	519,455	12	2,177,931	49	1,522,388	34	4,464,355
2005	222,668	5	458,467	10	2,386,655	53	1,435,584	32	4,503,374
2006	236,201	5	467,656	10	2,529,986	57	1,230,316	28	4,464,159
2007	246,870	6	454,689	10	2,482,424	57	1,153,323	27	4,337,306
2008	210,065	5	461,161	10	2,535,671	57	1,271,361	28	4,478,258
2009	248,974	5	478,936	11	2,608,349	58	1,195,163	26	4,531,422
2010	237,939	5	397,731	9	2,445,581	57	1,247,005	29	4,328,256
2011	224,058	5	427,689	10	2,416,962	57	1,186,001	28	4,254,710
2012	265,825	6	465,002	10	2,595,971	56	1,343,990	29	4,670,788
2013	253,188	5	424,416	9	2,799,595	58	1,311,105	27	4,788,304
2014	229,159	5	426,977	9	2,903,478	59	1,383,096	28	4,942,710
2015	222,048	5	426,209	9	2,765,978	58	1,368,371	29	4,782,606
2016	213,180	4	414,996	8	2,858,874	58	1,473,096	30	4,960,146
2017	235,838	5	402,739	8	2,709,803	56	1,493,452	31	4,841,832
2018	226,918	4	416,451	8	3,049,934	58	1,528,311	29	5,221,614
2019	218,210	4	384,419	7	3,251,799	61	1,510,256	28	5,364,684
2020	241,854	5	395,041	8	2,834,241	57	1,534,009	31	5,005,145
2021	210,850	4	361,047	7	2,921,937	58	1,586,793	31	5,080,627
2022	240,845	5	375,030	7	2,958,396	58	1,498,807	30	5,073,077
2023	212,406	4	371,945	7	2,964,503	59	1,516,096	30	5,064,950
2024	210,712	4	373,509	7	3,346,950	62	1,479,776	27	5,410,946

Table 15: Global catches of albacore, bigeye, skipjack and yellowfin, by ocean area

Year	WCPO		EPO		Atlantic		Indian		Total
	Tonnes	%	Tonnes	%	Tonnes	%	Tonnes	%	
1970	453,263	41	292,058	26	237,191	21	122,011	11	1,104,523
1971	471,520	40	299,670	25	290,958	25	115,683	10	1,177,831
1972	515,177	42	301,137	25	301,937	25	108,691	9	1,226,942
1973	633,040	45	336,680	24	304,880	22	127,262	9	1,401,862
1974	648,851	43	363,912	24	358,304	24	150,862	10	1,521,929
1975	577,988	41	407,235	29	302,119	21	127,723	9	1,415,065
1976	718,632	44	465,867	28	316,778	19	136,877	8	1,638,154
1977	742,777	44	402,836	24	372,569	22	153,038	9	1,671,220
1978	791,312	44	474,012	26	368,658	20	167,091	9	1,801,073
1979	760,032	46	407,146	25	338,014	20	151,647	9	1,656,839
1980	828,495	48	394,962	23	367,602	21	150,476	9	1,741,535
1981	801,699	45	393,158	22	416,733	24	152,272	9	1,763,862
1982	855,758	47	305,102	17	469,190	26	184,239	10	1,814,289
1983	1,062,004	55	242,106	12	430,504	22	206,256	11	1,940,870
1984	1,151,677	55	290,233	14	372,368	18	282,447	13	2,096,725
1985	1,005,922	47	365,224	17	429,982	20	329,683	15	2,130,811
1986	1,141,280	47	470,343	19	423,538	17	387,289	16	2,422,450
1987	1,138,590	47	466,991	19	403,643	17	427,741	18	2,436,965
1988	1,265,770	47	478,665	18	414,430	15	519,771	19	2,678,636
1989	1,304,251	47	480,880	17	424,384	15	541,886	20	2,751,401
1990	1,424,793	48	494,371	17	489,460	16	580,590	19	2,989,214
1991	1,649,808	51	452,498	14	539,051	17	586,961	18	3,228,318
1992	1,578,337	49	454,907	14	503,396	16	696,270	22	3,232,910
1993	1,467,700	45	439,261	13	554,088	17	824,532	25	3,285,581
1994	1,605,050	47	445,472	13	562,096	16	802,736	24	3,415,354
1995	1,620,519	47	492,763	14	514,855	15	809,177	24	3,437,314
1996	1,621,412	47	493,638	14	489,079	14	818,107	24	3,422,236
1997	1,663,909	47	563,292	16	452,083	13	856,374	24	3,535,658
1998	2,040,872	53	536,094	14	469,574	12	831,339	21	3,877,879
1999	1,835,519	46	678,105	17	502,204	13	971,134	24	3,986,962
2000	1,946,807	49	653,072	16	459,662	12	927,961	23	3,987,502
2001	1,855,604	47	725,269	18	484,624	12	913,347	23	3,978,844
2002	2,043,674	49	755,866	18	394,379	9	1,003,922	24	4,197,841
2003	2,064,352	47	845,983	19	424,528	10	1,077,585	24	4,412,448
2004	2,249,914	50	644,000	14	419,111	9	1,148,811	26	4,461,836
2005	2,227,962	50	684,031	15	399,550	9	1,186,807	26	4,498,350
2006	2,284,889	51	625,640	14	381,814	9	1,168,961	26	4,461,304
2007	2,516,960	58	514,864	12	370,258	9	933,587	22	4,335,669
2008	2,565,733	57	624,227	14	366,618	8	917,576	21	4,474,154
2009	2,620,374	58	622,034	14	421,152	9	861,012	19	4,524,572
2010	2,504,934	58	545,573	13	424,547	10	854,840	20	4,329,894
2011	2,343,716	55	616,366	14	456,295	11	837,809	20	4,254,186
2012	2,661,499	57	626,793	13	489,199	10	892,757	19	4,670,248
2013	2,693,258	56	640,462	13	476,802	10	975,378	20	4,785,900
2014	2,885,525	58	652,174	13	461,121	9	956,707	19	4,955,527
2015	2,630,202	55	741,021	15	494,029	10	928,081	19	4,793,333
2016	2,693,460	54	727,065	15	534,267	11	1,005,989	20	4,960,781
2017	2,567,899	53	688,854	14	529,329	11	1,057,098	22	4,843,180
2018	2,797,219	54	674,642	13	566,069	11	1,187,683	23	5,225,613
2019	2,953,672	55	719,440	13	532,355	10	1,160,936	22	5,366,403
2020	2,753,585	55	662,812	13	483,593	10	1,105,505	22	5,005,495
2021	2,681,336	53	706,399	14	483,593	10	1,202,746	24	5,074,074
2022	2,634,052	52	702,561	14	483,593	10	1,233,888	24	5,054,094
2023	2,634,835	52	702,561	14	503,789	10	1,240,318	24	5,081,503
2024	2,986,924	55	703,860	13	503,789	9	1,240,318	23	5,434,891

Table 16: Estimated discards (tonnes) by longliners in the WCPFC Statistical Area (2023-2024 data are provisional)

Year	Albacore			Bigeye			Yellowfin			Total		
	Retained + Discarded	Discarded	%	Retained + Discarded	Discarded	%	Retained + Discarded	Discarded	%	Retained + Discarded	Discarded	%
2013	99,518	922	0.9 %	67,341	1,704	2.6 %	79,944	2,598	3.4 %	246,804	5,225	2.1 %
2014	87,884	890	1 %	78,531	3,097	4.1 %	103,418	3,043	3 %	269,832	7,029	2.6 %
2015	91,241	885	1 %	76,920	3,523	4.8 %	109,709	5,334	5.1 %	277,870	9,742	3.5 %
2016	80,833	693	0.9 %	64,783	1,706	2.7 %	95,652	3,782	4.1 %	241,269	6,182	2.6 %
2017	100,319	918	0.9 %	59,748	1,622	2.8 %	89,552	3,325	3.9 %	249,619	5,865	2.3 %
2018	87,186	739	0.9 %	71,130	2,219	3.2 %	101,824	4,097	4.2 %	260,140	7,055	2.7 %
2019	90,587	1,059	1.2 %	70,898	2,661	3.9 %	109,072	4,646	4.4 %	270,558	8,367	3.1 %
2020	79,018	1,274	1.6 %	60,303	2,617	4.5 %	79,260	5,069	6.8 %	218,581	8,960	4.1 %
2021	73,392	983	1.4 %	56,956	2,316	4.2 %	79,705	4,177	5.5 %	210,053	7,476	3.6 %
2022	85,152	1,426	1.7 %	57,071	1,782	3.2 %	93,152	4,704	5.3 %	235,375	7,912	3.4 %
2023	89,853	1,747	2 %	57,332	1,681	3 %	88,057	3,384	4 %	235,241	6,811	2.9 %
2024	99,074	1,207	1.2 %	50,266	2,599	5.5 %	82,724	3,862	4.9 %	232,064	7,668	3.3 %

Table 17: Estimated discards (tonnes) by purse seiners in the WCPFC Statistical Area (excluding the domestic fisheries of Indoneisa and Philippines)

Year	Skipjack			Bigeye			Yellowfin			Total		
	Retained + Discarded	Discarded	%	Retained + Discarded	Discarded	%	Retained + Discarded	Discarded	%	Retained + Discarded	Discarded	%
2013	1,514,418	38,707	2.6 %	86,354	1,950	2.3 %	379,305	6,656	1.8 %	1,980,077	47,313	2.4 %
2014	1,690,845	74,309	4.6 %	83,730	2,300	2.8 %	388,940	9,036	2.4 %	2,163,515	85,645	4 %
2015	1,434,899	41,762	3 %	62,881	1,911	3.1 %	324,516	6,958	2.2 %	1,822,296	50,631	2.8 %
2016	1,414,568	38,196	2.8 %	76,318	2,262	3.1 %	415,098	6,393	1.6 %	1,905,983	46,850	2.5 %
2017	1,279,514	16,202	1.3 %	68,044	1,234	1.8 %	505,468	4,962	1 %	1,853,026	22,398	1.2 %
2018	1,463,730	13,529	0.9 %	78,185	737	1 %	382,181	2,517	0.7 %	1,924,096	16,783	0.9 %
2019	1,714,478	11,446	0.7 %	52,420	339	0.7 %	345,912	2,037	0.6 %	2,112,810	13,822	0.7 %
2020	1,464,594	14,175	1 %	69,849	668	1 %	402,720	3,228	0.8 %	1,937,163	18,071	0.9 %
2021	1,410,581	11,469	0.8 %	57,260	246	0.4 %	417,817	2,465	0.6 %	1,885,658	14,180	0.8 %
2022	1,467,869	5,517	0.4 %	61,249	528	0.9 %	358,242	1,365	0.4 %	1,887,360	7,410	0.4 %
2023	1,436,832	8,438	0.6 %	42,257	207	0.5 %	395,213	1,341	0.3 %	1,874,302	9,986	0.5 %
2024	1,771,904	7,744	0.4 %	34,696	134	0.4 %	329,983	896	0.3 %	2,136,583	8,774	0.4 %



Table 18: Commercial catches of billfish in the WCPFC Statistical Area, by gear and species

Year	Longline				Subtotal
	Blue Marlin	Black Marlin	Striped Marlin	Swordfish	
1970	9,977	3,544	7,594	7,578	28,693
1971	6,450	3,776	6,373	8,615	25,214
1972	7,957	3,696	5,194	8,110	24,957
1973	7,483	3,793	5,550	7,303	24,129
1974	7,253	3,115	4,788	7,990	23,146
1975	7,079	3,281	3,764	8,519	22,643
1976	6,710	2,242	3,497	9,955	22,404
1977	7,020	2,427	2,948	9,583	21,978
1978	8,861	2,787	3,744	9,871	25,263
1979	9,414	2,395	5,059	11,178	28,046
1980	10,245	1,552	4,823	8,740	25,360
1981	10,332	2,009	4,773	10,111	27,225
1982	10,398	2,023	4,536	9,214	26,171
1983	9,005	1,741	3,476	10,108	24,330
1984	12,197	1,317	4,836	9,975	28,325
1985	9,667	1,048	5,509	12,415	28,639
1986	10,348	1,121	6,175	11,473	29,117
1987	14,403	1,533	5,558	12,930	34,424
1988	14,553	2,294	7,613	12,804	37,264
1989	11,893	1,207	6,646	10,695	30,441
1990	10,200	1,120	4,871	11,470	27,661
1991	10,842	1,449	5,237	12,713	30,241
1992	13,302	1,650	5,363	18,322	38,637
1993	15,854	1,428	10,600	19,637	47,519
1994	15,609	1,844	6,189	17,057	40,699
1995	18,044	1,335	7,189	15,714	42,282
1996	14,526	945	5,834	15,177	36,482
1997	12,544	964	5,010	18,175	36,693
1998	16,449	1,545	7,080	19,299	44,373
1999	14,573	1,927	5,882	20,539	42,921
2000	13,797	1,296	4,269	21,215	40,577
2001	15,583	1,498	4,781	18,291	40,153
2002	15,527	1,795	4,375	18,889	40,586
2003	24,193	2,031	5,364	20,236	51,824
2004	21,847	2,293	4,955	22,065	51,160
2005	20,126	2,734	4,539	20,518	47,917
2006	17,850	2,430	4,218	23,382	47,880
2007	15,035	1,773	3,419	25,553	45,780
2008	15,011	1,771	3,645	22,531	42,958
2009	14,916	1,972	2,830	19,765	39,483
2010	15,904	2,104	3,025	17,575	38,608
2011	14,913	1,739	3,692	18,182	38,526
2012	14,539	1,563	3,766	19,587	39,455
2013	15,835	1,682	3,443	18,015	38,975
2014	16,913	2,050	3,696	18,091	40,750
2015	16,111	2,282	4,000	19,491	41,884
2016	14,920	1,233	2,773	17,855	36,781
2017	12,622	927	2,675	16,960	33,184
2018	11,753	948	2,520	17,253	32,474
2019	11,942	1,000	3,019	14,232	30,193
2020	8,149	901	2,937	14,710	26,697
2021	7,763	989	2,699	14,015	25,466
2022	7,742	917	2,314	13,545	24,518
2023	8,962	734	2,948	13,779	26,422
2024	12,435	819	3,692	11,219	28,166



Table 18: Commercial catches of billfish in the WCPFC Statistical Area, by gear and species (*continued*)

Year	Purse seine				Subtotal
	Blue Marlin	Black Marlin	Striped Marlin	Swordfish	
1970	6	14	...	...	20
1971	8	19	...	...	27
1972	9	20	...	...	29
1973	14	31	...	...	45
1974	7	17	...	...	24
1975	7	17	...	...	24
1976	6	16	...	...	22
1977	9	21	...	...	30
1978	8	20	...	...	28
1979	13	29	...	...	42
1980	13	29	...	...	42
1981	30	60	...	...	90
1982	42	90	...	...	132
1983	67	132	...	...	199
1984	86	161	...	...	247
1985	69	137	...	...	206
1986	66	128	...	...	194
1987	73	145	...	...	218
1988	71	142	...	...	213
1989	86	169	...	...	255
1990	95	184	...	...	279
1991	135	253	...	...	388
1992	141	241	...	...	382
1993	142	246	...	...	388
1994	141	239	...	...	380
1995	144	242	...	...	386
1996	160	263	...	...	423
1997	179	270	...	...	449
1998	182	267	...	...	449
1999	153	235	...	...	388
2000	184	273	...	...	457
2001	189	257	...	...	446
2002	205	278	...	...	483
2003	214	283	...	...	497
2004	226	293	...	...	519
2005	848	628	...	...	1,476
2006	611	399	...	...	1,010
2007	824	268	...	...	1,092
2008	592	442	...	...	1,034
2009	579	344	...	...	923
2010	644	661	...	...	1,305
2011	752	429	...	...	1,181
2012	918	367	...	...	1,285
2013	946	529	...	...	1,475
2014	869	424	2	...	1,295
2015	1,218	350	22	20	1,610
2016	935	382	51	40	1,408
2017	559	379	40	11	989
2018	719	404	43	14	1,180
2019	590	264	33	41	928
2020	492	340	23	12	867
2021	615	340	24	157	1,137
2022	572	318	19	151	1,060
2023	780	865	456	261	2,362
2024	234	101	33	9	377





Table 18: Commercial catches of billfish in the WCPFC Statistical Area, by gear and species (*continued*)

Year	Other gears					Total
	Blue Marlin	Black Marlin	Striped Marlin	Swordfish	Subtotal	
1970	201	50	1,184	1,895	3,330	32,043
1971	219	56	2,284	617	3,176	28,417
1972	237	59	1,369	436	2,101	27,087
1973	584	69	4,011	972	5,636	29,810
1974	572	80	3,930	1,789	6,371	29,541
1975	1,265	82	7,255	3,072	11,674	34,341
1976	1,311	71	4,163	4,138	9,683	32,109
1977	1,608	96	4,980	2,802	9,486	31,494
1978	1,644	67	6,035	2,855	10,601	35,892
1979	1,168	81	3,058	1,368	5,675	33,763
1980	1,333	72	4,008	2,308	7,721	33,123
1981	1,709	80	4,410	2,201	8,400	35,715
1982	1,560	69	2,997	1,643	6,269	32,572
1983	1,696	78	2,667	1,386	5,827	30,356
1984	1,099	101	3,060	1,420	5,680	34,252
1985	1,414	130	3,116	1,540	6,200	35,045
1986	1,201	139	4,181	1,633	7,154	36,465
1987	1,088	100	2,399	1,317	4,904	39,546
1988	1,228	108	2,880	1,552	5,768	43,245
1989	1,313	116	2,211	2,115	5,755	36,451
1990	1,375	166	2,489	1,388	5,418	33,358
1991	1,270	180	1,839	883	4,172	34,801
1992	1,146	131	1,515	1,393	4,185	43,204
1993	1,112	127	1,267	747	3,253	51,160
1994	1,423	140	1,824	924	4,311	45,390
1995	1,491	158	1,248	1,203	4,100	46,768
1996	1,921	166	912	1,260	4,259	41,164
1997	1,759	155	1,017	830	3,761	40,903
1998	1,871	178	1,421	1,082	4,552	49,374
1999	1,897	184	1,340	1,256	4,677	47,986
2000	1,042	137	1,380	1,404	3,963	44,997
2001	1,117	129	1,370	1,050	3,666	44,265
2002	1,085	142	1,587	1,452	4,266	45,335
2003	1,138	177	1,261	1,440	4,016	56,337
2004	1,147	185	1,466	1,383	4,181	55,860
2005	1,203	185	1,334	1,542	4,264	53,657
2006	1,182	206	1,308	1,447	4,143	53,033
2007	1,318	236	1,083	1,389	4,026	50,898
2008	1,298	224	1,446	1,227	4,195	48,187
2009	1,041	145	974	1,211	3,371	43,777
2010	1,390	180	1,042	856	3,468	43,381
2011	1,350	173	492	461	2,476	42,183
2012	1,815	232	741	1,886	4,674	45,414
2013	1,961	228	469	2,897	5,555	46,005
2014	2,430	371	277	2,612	5,690	47,735
2015	2,246	310	447	2,807	5,810	49,304
2016	4,749	262	714	3,750	9,475	47,664
2017	2,567	405	403	1,994	5,369	39,542
2018	2,692	435	459	2,117	5,703	39,357
2019	2,678	431	408	1,928	5,445	36,566
2020	3,786	1,312	265	1,068	6,431	33,995
2021	2,448	1,069	250	968	4,735	31,338
2022	2,737	1,205	253	1,004	5,199	30,777
2023	1,390	7,650	538	1,090	10,668	39,453
2024	613	8,438	649	2,564	12,264	40,807

Table 19: Commercial catches of billfish in the WCPFC Statistical Area, by species

Year	Blue Marlin		Black Marlin		Striped Marlin		Swordfish		Total
	Tonnes	%	Tonnes	%	Tonnes	%	Tonnes	%	
1970	10,184	32	3,608	11	8,778	27	9,473	30	32,043
1971	6,677	23	3,851	14	8,657	30	9,232	32	28,417
1972	8,203	30	3,775	14	6,563	24	8,546	32	27,087
1973	8,081	27	3,893	13	9,561	32	8,275	28	29,810
1974	7,832	27	3,212	11	8,718	30	9,779	33	29,541
1975	8,351	24	3,380	10	11,019	32	11,591	34	34,341
1976	8,027	25	2,329	7	7,660	24	14,093	44	32,109
1977	8,637	27	2,544	8	7,928	25	12,385	39	31,494
1978	10,513	29	2,874	8	9,779	27	12,726	35	35,892
1979	10,595	31	2,505	7	8,117	24	12,546	37	33,763
1980	11,591	35	1,653	5	8,831	27	11,048	33	33,123
1981	12,071	34	2,149	6	9,183	26	12,312	34	35,715
1982	12,000	37	2,182	7	7,533	23	10,857	33	32,572
1983	10,768	35	1,951	6	6,143	20	11,494	38	30,356
1984	13,382	39	1,579	5	7,896	23	11,395	33	34,252
1985	11,150	32	1,315	4	8,625	25	13,955	40	35,045
1986	11,615	32	1,388	4	10,356	28	13,106	36	36,465
1987	15,564	39	1,778	4	7,957	20	14,247	36	39,546
1988	15,852	37	2,544	6	10,493	24	14,356	33	43,245
1989	13,292	36	1,492	4	8,857	24	12,810	35	36,451
1990	11,670	35	1,470	4	7,360	22	12,858	39	33,358
1991	12,247	35	1,882	5	7,076	20	13,596	39	34,801
1992	14,589	34	2,022	5	6,878	16	19,715	46	43,204
1993	17,108	33	1,801	4	11,867	23	20,384	40	51,160
1994	17,173	38	2,223	5	8,013	18	17,981	40	45,390
1995	19,679	42	1,735	4	8,437	18	16,917	36	46,768
1996	16,607	40	1,374	3	6,746	16	16,437	40	41,164
1997	14,482	35	1,389	3	6,027	15	19,005	46	40,903
1998	18,502	37	1,990	4	8,501	17	20,381	41	49,374
1999	16,623	35	2,346	5	7,222	15	21,795	45	47,986
2000	15,023	33	1,706	4	5,649	13	22,619	50	44,997
2001	16,889	38	1,884	4	6,151	14	19,341	44	44,265
2002	16,817	37	2,215	5	5,962	13	20,341	45	45,335
2003	25,545	45	2,491	4	6,625	12	21,676	38	56,337
2004	23,220	42	2,771	5	6,421	11	23,448	42	55,860
2005	22,177	41	3,547	7	5,873	11	22,060	41	53,657
2006	19,643	37	3,035	6	5,526	10	24,829	47	53,033
2007	17,177	34	2,277	4	4,502	9	26,942	53	50,898
2008	16,901	35	2,437	5	5,091	11	23,758	49	48,187
2009	16,536	38	2,461	6	3,804	9	20,976	48	43,777
2010	17,938	41	2,945	7	4,067	9	18,431	42	43,381
2011	17,015	40	2,341	6	4,184	10	18,643	44	42,183
2012	17,272	38	2,162	5	4,507	10	21,473	47	45,414
2013	18,742	41	2,439	5	3,912	9	20,912	45	46,005
2014	20,212	42	2,845	6	3,975	8	20,703	43	47,735
2015	19,575	40	2,942	6	4,469	9	22,318	45	49,304
2016	20,604	43	1,877	4	3,538	7	21,645	45	47,664
2017	15,748	40	1,711	4	3,118	8	18,965	48	39,542
2018	15,164	39	1,787	5	3,022	8	19,384	49	39,357
2019	15,210	42	1,695	5	3,460	9	16,201	44	36,566
2020	12,427	37	2,553	8	3,225	9	15,790	46	33,995
2021	10,826	35	2,398	8	2,973	9	15,140	48	31,338
2022	11,051	36	2,440	8	2,586	8	14,700	48	30,777
2023	11,131	28	9,250	23	3,942	10	15,130	38	39,453
2024	13,283	33	9,358	23	4,375	11	13,792	34	40,807



Table 20: Commercial catches of albacore tuna, striped marlin and swordfish in the WCPFC Statistical Area north of the equator

Year	Albacore		Striped Marlin		Swordfish		Total
	Tonnes	%	Tonnes	%	Tonnes	%	
1970	40,915	72	7,571	13	8,517	15	57,003
1971	66,521	83	6,562	8	7,289	9	80,372
1972	76,208	87	4,550	5	6,606	8	87,364
1973	85,831	86	7,496	7	6,769	7	100,096
1974	87,885	86	7,044	7	7,816	8	102,745
1975	65,407	76	9,788	11	10,406	12	85,601
1976	104,798	85	6,222	5	11,904	10	122,924
1977	49,471	73	7,021	10	11,643	17	68,135
1978	79,431	80	8,399	8	11,853	12	99,683
1979	60,913	78	6,605	8	11,011	14	78,529
1980	64,522	79	7,702	9	9,326	11	81,550
1981	55,756	76	7,200	10	10,047	14	73,003
1982	59,670	81	5,315	7	8,625	12	73,610
1983	41,879	74	4,948	9	10,133	18	56,960
1984	52,154	76	6,491	9	9,776	14	68,421
1985	49,033	72	7,312	11	11,990	18	68,335
1986	39,769	66	9,294	15	11,168	19	60,231
1987	44,163	70	6,629	11	11,903	19	62,695
1988	39,392	67	8,659	15	10,697	18	58,748
1989	40,921	71	6,510	11	10,262	18	57,693
1990	49,295	76	5,733	9	9,716	15	64,744
1991	33,196	67	5,694	11	10,690	22	49,580
1992	48,101	70	5,422	8	15,222	22	68,745
1993	46,074	63	10,247	14	16,965	23	73,286
1994	57,705	75	5,911	8	13,773	18	77,389
1995	57,990	75	6,242	8	12,862	17	77,094
1996	59,379	78	4,827	6	11,611	15	75,817
1997	76,780	81	4,274	5	13,536	14	94,590
1998	64,526	78	5,499	7	13,139	16	83,164
1999	98,972	84	4,692	4	14,130	12	117,794
2000	60,908	76	3,762	5	15,394	19	80,064
2001	62,278	79	4,011	5	12,051	15	78,340
2002	79,781	83	3,438	4	12,337	13	95,556
2003	65,021	79	3,854	5	13,725	17	82,600
2004	67,759	79	3,890	5	14,148	16	85,797
2005	47,785	73	3,714	6	14,178	22	65,677
2006	46,374	72	3,369	5	14,738	23	64,481
2007	71,873	80	2,682	3	15,551	17	90,106
2008	47,234	74	3,209	5	13,036	21	63,479
2009	60,546	81	2,121	3	12,156	16	74,823
2010	48,237	78	2,486	4	11,028	18	61,751
2011	56,980	83	2,488	4	9,487	14	68,955
2012	68,742	83	2,901	4	11,216	14	82,859
2013	62,805	82	2,556	3	11,028	14	76,389
2014	57,548	81	2,381	3	10,700	15	70,629
2015	51,386	76	2,877	4	12,948	19	67,211
2016	40,221	73	2,241	4	12,455	23	54,917
2017	48,231	78	1,956	3	11,416	19	61,603
2018	42,369	75	1,964	3	12,071	21	56,404
2019	33,171	72	2,397	5	10,374	23	45,942
2020	62,501	84	2,079	3	9,792	13	74,372
2021	40,944	79	1,716	3	8,968	17	51,628
2022	23,074	71	1,452	4	8,016	25	32,542
2023	42,685	79	2,017	4	9,503	18	54,206
2024	45,839	80	2,599	5	9,036	16	57,473



Table 21: Commercial catches of albacore tuna, striped marlin and swordfish in the WCPFC Statistical Area south of the equator

Year	Albacore		Striped Marlin		Swordfish		Total
	Tonnes	%	Tonnes	%	Tonnes	%	
1970	33,435	94	1,204	3	956	3	35,595
1971	34,216	89	2,085	5	1,942	5	38,243
1972	33,447	89	2,013	5	1,940	5	37,400
1973	45,314	93	2,065	4	1,506	3	48,885
1974	27,277	88	1,674	5	1,963	6	30,914
1975	19,244	89	1,230	6	1,185	5	21,659
1976	28,143	89	1,438	5	2,188	7	31,769
1977	33,691	95	906	3	740	2	35,337
1978	31,721	93	1,380	4	872	3	33,973
1979	25,073	89	1,512	5	1,533	5	28,118
1980	30,615	91	1,128	3	1,719	5	33,462
1981	32,353	88	1,983	5	2,264	6	36,600
1982	29,931	87	2,219	6	2,231	6	34,381
1983	24,323	90	1,195	4	1,359	5	26,877
1984	22,884	88	1,406	5	1,618	6	25,908
1985	28,591	90	1,313	4	1,965	6	31,869
1986	32,714	92	1,060	3	1,938	5	35,712
1987	22,814	86	1,328	5	2,344	9	26,486
1988	36,961	87	1,833	4	3,655	9	42,449
1989	47,990	91	2,344	4	2,548	5	52,882
1990	32,194	87	1,599	4	3,094	8	36,887
1991	29,376	88	1,336	4	2,832	8	33,544
1992	34,488	86	1,369	3	4,446	11	40,303
1993	31,422	86	1,620	4	3,418	9	36,460
1994	38,756	86	2,102	5	4,208	9	45,066
1995	33,736	84	2,193	5	4,053	10	39,982
1996	31,661	82	1,915	5	4,807	13	38,383
1997	36,012	83	1,752	4	5,462	13	43,226
1998	47,569	82	2,940	5	7,235	13	57,744
1999	31,958	76	2,528	6	7,660	18	42,146
2000	40,539	82	1,837	4	7,220	15	49,596
2001	59,229	86	2,089	3	7,287	11	68,605
2002	68,151	87	2,488	3	7,991	10	78,630
2003	58,122	84	2,813	4	7,881	11	68,816
2004	54,433	82	2,694	4	9,142	14	66,269
2005	57,497	85	2,146	3	7,818	12	67,461
2006	58,883	83	1,999	3	9,654	14	70,536
2007	54,911	81	1,757	3	11,406	17	68,074
2008	57,874	82	1,929	3	10,508	15	70,311
2009	75,076	88	1,868	2	8,348	10	85,292
2010	73,245	89	1,581	2	7,790	9	82,616
2011	57,803	84	1,722	2	9,539	14	69,064
2012	75,050	85	1,768	2	11,138	13	87,956
2013	75,591	86	1,388	2	10,454	12	87,433
2014	49,893	81	1,576	3	10,070	16	61,539
2015	53,644	83	1,575	2	9,203	14	64,422
2016	59,338	85	1,295	2	9,157	13	69,790
2017	78,310	90	1,160	1	7,548	9	87,018
2018	66,563	89	1,036	1	7,256	10	74,855
2019	68,601	91	1,042	1	5,745	8	75,388
2020	63,066	90	1,090	2	5,902	8	70,058
2021	47,150	87	1,255	2	6,034	11	54,440
2022	66,882	90	1,125	2	6,506	9	74,514
2023	64,851	89	1,756	2	6,242	9	72,849
2024	73,958	92	1,731	2	4,280	5	79,969





Table 22: Commercial catches of albacore tuna, striped marlin and swordfish in the South Pacific Ocean

Year	Albacore		Striped Marlin		Swordfish		Total
	Tonnes	%	Tonnes	%	Tonnes	%	
1970	34,925	92	2,316	6	879	2	38,120
1971	38,630	83	5,237	11	2,451	5	46,318
1972	39,521	85	4,307	9	2,604	6	46,432
1973	47,326	89	3,395	6	2,727	5	53,448
1974	34,049	86	3,042	8	2,556	6	39,647
1975	23,600	84	2,629	9	1,935	7	28,164
1976	29,076	80	3,919	11	3,397	9	36,392
1977	38,731	88	2,797	6	2,304	5	43,832
1978	34,667	86	2,827	7	2,669	7	40,163
1979	27,055	80	3,966	12	2,634	8	33,655
1980	32,516	83	3,532	9	3,319	8	39,367
1981	34,782	80	4,843	11	3,631	8	43,256
1982	30,780	79	4,719	12	3,311	9	38,810
1983	25,073	81	3,153	10	2,764	9	30,990
1984	24,685	83	2,447	8	2,640	9	29,772
1985	32,316	87	2,235	6	2,641	7	37,192
1986	36,590	86	2,722	6	3,293	8	42,605
1987	25,052	75	4,170	13	4,132	12	33,354
1988	37,867	80	3,657	8	5,717	12	47,241
1989	49,076	87	3,985	7	3,627	6	56,688
1990	36,062	80	3,967	9	5,287	12	45,316
1991	35,600	80	3,397	8	5,269	12	44,266
1992	38,668	78	3,266	7	7,734	16	49,668
1993	35,438	79	3,578	8	5,770	13	44,786
1994	42,318	80	4,211	8	6,420	12	52,949
1995	38,443	80	3,612	8	5,876	12	47,931
1996	34,259	77	3,764	8	6,510	15	44,533
1997	39,526	77	4,053	8	7,782	15	51,361
1998	50,364	78	4,685	7	9,547	15	64,596
1999	40,647	77	3,287	6	8,844	17	52,778
2000	49,980	81	2,523	4	8,953	15	61,456
2001	65,636	82	3,120	4	11,414	14	80,170
2002	77,856	79	4,369	4	16,290	17	98,515
2003	65,395	79	4,265	5	13,283	16	82,943
2004	65,470	75	3,627	4	18,326	21	87,423
2005	67,016	78	3,149	4	15,529	18	85,694
2006	67,641	76	2,886	3	18,140	20	88,667
2007	60,199	75	2,357	3	17,642	22	80,198
2008	63,577	77	2,416	3	17,069	21	83,062
2009	84,688	80	2,289	2	18,842	18	105,819
2010	84,415	79	2,142	2	19,932	19	106,489
2011	65,954	73	2,746	3	21,609	24	90,309
2012	87,737	76	2,719	2	24,277	21	114,733
2013	87,982	77	2,090	2	23,787	21	113,859
2014	68,543	73	2,295	2	23,689	25	94,527
2015	72,254	73	2,100	2	25,286	25	99,640
2016	74,039	73	1,812	2	25,363	25	101,214
2017	94,499	80	1,666	1	22,032	19	118,197
2018	81,430	76	1,594	1	23,831	22	106,855
2019	77,823	79	1,419	1	18,762	19	98,004
2020	72,604	77	1,624	2	19,678	21	93,906
2021	70,329	77	1,758	2	18,907	21	90,994
2022	89,054	81	1,264	1	19,294	18	109,612
2023	66,764	78	1,971	2	17,190	20	85,925
2024	74,290	79	1,769	2	17,622	19	93,681